

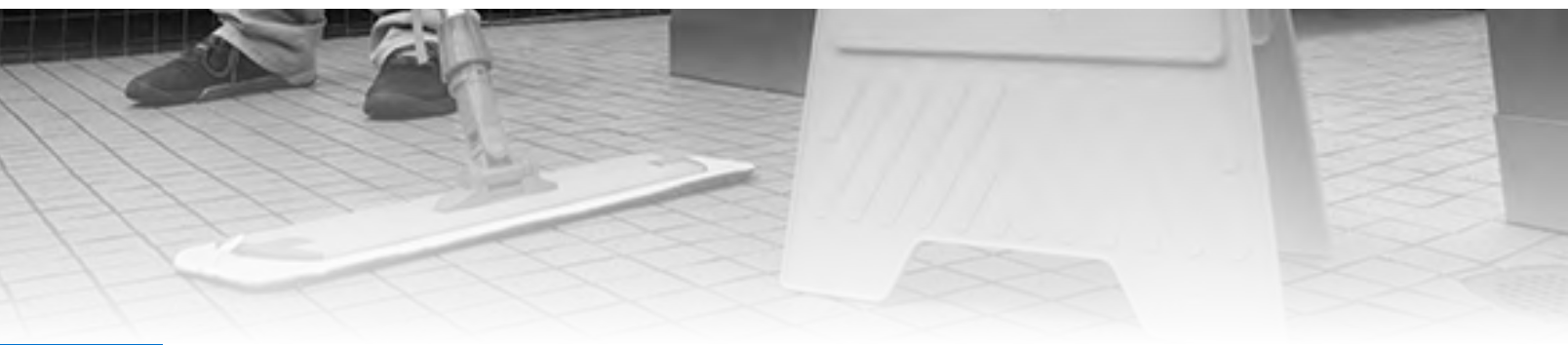


Washroom

impact
Everything.

Washroom

Eclipse®	3
OXY-GEN® and Metered Air	4
Urinal & Commode Mats	5
Urinal Screens	6
Deodorant Cabinets	9
Odor Guard Drip Systems	9
Sanitary Napkins & Tampons	11
Personal Care Vendors	12
Napkin Receptacles & Liners	14
Toilet Seat Covers	17
Toilet Seat Cover Dispensers	18
Infant Care	19
Soap Dispensers	20
Toilet Paper Dispensers	24
Towel Dispensers	25
Hand Dryers	28
Toilet Plungers	28
Toilet Bowl Mops & Caddies	29
Inspection Tools	31





159736

Eclipse™ Urinal Screen

The Eclipse™ Urinal Screen is available in 10 fragrances that help keep restrooms smelling fresh and clean.

- 30 days of high frequency fragrancing
- Unique design eliminates virtually all splash back
- Designed to fit virtually all shapes and sizes of urinals
- Stronger and longer lasting fragrance
- Patent Pending

ITEM	DESCRIPTION	CS QTY
149036	Red / Apple Zing	12/bx; 3 bx/cs
149136	Light Green / Winter Frost	12/bx; 3 bx/cs
149236	Light Purple / Berry Fusion	12/bx; 3 bx/cs
149336	Yellow / Citrus Grove	12/bx; 3 bx/cs
149536	Blue / Ocean Breeze	12/bx; 3 bx/cs
149736	Green / Cucumber Melon	12/bx; 3 bx/cs
149936	Light Blue / Fresh Cotton	12/bx; 3 bx/cs
159636	Orange / Tropical Mango	12/bx; 3 bx/cs
159736	Dark Purple / Lavender Fields	12/bx; 3 bx/cs
159836	Clear/Piña Colada	12/bx; 3 bx/cs

Eclipse™ Clip

The perfect companion to the Eclipse™ Urinal Screen

- Battles odors effectively for 30 days
- Dispenses a high intensity, clean smelling fragrance
- Can be “clipped” to the rim of any toilet bowl, stall door, shelf or other area
- Patent Pending

ITEM	DESCRIPTION	CS QTY
2493	Yellow / Citrus Grove	12/bx; 3 bx/cs
2495	Blue / Ocean Breeze	12/bx; 3 bx/cs
2497	Green / Cucumber Melon	12/bx; 3 bx/cs
2596	Orange / Tropical Mango	12/bx; 3 bx/cs
2597	Dark Purple / Lavender Fields	12/bx; 3 bx/cs



2497

Oxy-Gen® and Metered Air



GJO99659

OXY-GEN® Active Air Care System

Ideal for washrooms, offices, nursing and care homes, hospitals, hotels, etc.

- Gradually dispersed fragrance delivers continuous fragrance intensity
- Unique cellular diffuser will not dry out or become saturated too quickly
- Simple to install and service - just twist and go
- Operates on 2 AA alkaline batteries (not included), lasts for a minimum of 1 year

ITEM	DESCRIPTION	CS QTY
GJO99659	Dispenser	6/cs
GJO99660	Citrus Grove Cartridge	12/cs
GJO99661	Cucumber Melon Cartridge	12/cs
GJO99662	Lavendar Fields Cartridge	12/cs
GJO99663	Cotton Fields Cartridge	12/cs
99665	Dispenser + Intro Packs	1/cs

Sensor Metered Aerosol Dispensers

Accommodates most metered aerosols and features spray intervals.

- #[327](#) has continuous 15 minute interval
- #[326](#) has 7-30 minute interval and 3 options: continuous, when light, when dark
- Green LED light shows battery is operating; Red light blinking indicates a need for battery replacement
- Operational mode switch to select: 24 hour, day only or night only

ITEM	DESCRIPTION	CS QTY
326	White Sensor Dispenser	1/bx; 12 bx/cs
327	White Basic Dispenser	1/bx; 12 bx/cs



326



325B

Metered 7 oz. Aerosol Air Fresheners

Freshens room up to 6000 cubic feet with a fine mist spray.

- 9 Fragrances available; contains 3,000 sprays, 10-30% more than most competitors
- Formulated with neutralizing counteractant to encapsulate malodors
- Recommended for use in schools, hospitals, institutions, and offices

ITEM	DESCRIPTION	CS QTY
325A	Apple Zing	12/cs
325B	Ocean Breeze	12/cs
325C	Cinnamon Twist	12/cs
325L	Fresh Cotton	12/cs
325LV	Lavender Fields	12/cs
325M	Mulberry Mist	12/cs
325MA	Tropical Mango	12/cs
325O	Orange Zest	12/cs
325V	Vanilla Bean	12/cs
325B4	Ocean Breeze	4/pk; 16/cs
325L4	Fresh Cotton	4/pk; 16/cs
325MA4	Tropical Mango	4/pk; 16/cs
325V4	Vanilla Bean	4/pk; 16/cs

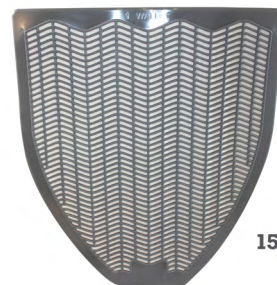
Urinal & Commode Mats

Fragranced Urinal Mat

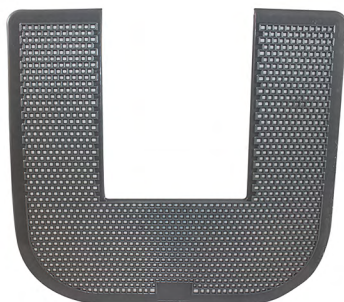
Protect floors from stains and uric acid damage for up to 6 weeks.

- Backing grips floor tightly to prevent sliding
- Contains fungicide (Busan® 11-m1) to fight germs; combats odor
- Prevents puddling and floor damage

ITEM	DESCRIPTION	CS QTY
1525	Gray	6/cs
1525-5	Black	6/cs



1525



1550

Fragranced Commode Mat

Protect floors from stains and uric acid damage for up to 6 weeks.

- Backing grips floor tightly to prevent sliding
- Contains fungicide (Busan® 11-m1) to fight germs; combats odor
- Prevents puddling and floor damage

ITEM	DESCRIPTION	CS QTY
1550	Gray	6/cs
1550-5	Black	6/cs



1650

Disposable Urinal Floor Mat

The unique Moisture Barrier backing on our new Urinal Floor Mat protects floors while reducing odors.

- Non-slip backing holds mats in place
- No paper backing or Velcro makes for easy installation
- The non-woven fiber surface is quick drying
- Can be mopped over and provides an upscale appearance for high-end venues

ITEM	DESCRIPTION	CS QTY
1650	Charcoal	6/cs

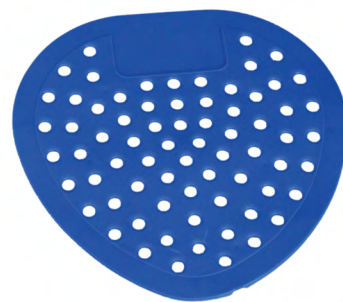
Urinal Screens

Deluxe Deodorizing Urinal Screen

100% Virgin plastic and up to 45 days of odor reduction.

- Patented elevated risers
- Tapered drain holes help prevent splash-back
- Flexible design fits most urinals

ITEM	DESCRIPTION	CS QTY
1400-50	White / Cherry	50/cs
1401-50	Red / Cherry	50/cs
1402-50	Blue / Bubblegum	50/cs
1421-50	White / Vanilla	50/cs



1402-50



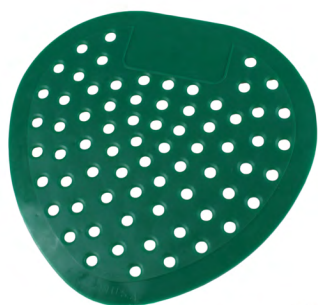
1440

Pee Wee Deodorizing Urinal Screen

Small size deodorizing urinal screen fits most urinals.

- Patented elevated risers and tapered drain holes help prevent splash-back
- Easily cleaned
- Patented tapered drain holes help prevent splash-back

ITEM	DESCRIPTION	CS QTY
1440-50	Red / Cherry	50/cs



1453

Regular Deodorizing Urinal Screen

Basic urinal screen in a variety of scents and colors.

- One size fits most urinals
- Easily cleaned

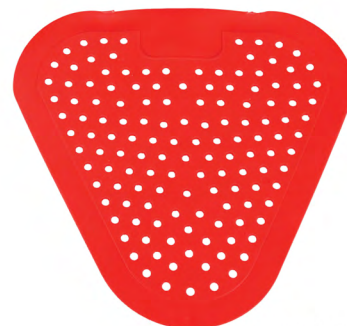
ITEM	DESCRIPTION	CS QTY
1451-50	Red / Cherry	50/cs
1452-50	Blue / Bubblegum	50/cs
1453-50	Green / Mint	50/cs
1460-50	Gray / Green Apple	50/cs

Super Deluxe Deodorizing Urinal Screen

The largest deodorizing urinal screen, lasting 45-60 days.

- 100% Virgin plastic
- Easily cleaned

ITEM	DESCRIPTION	CS QTY
1471-50	Red / Cherry	50/cs
1472-50	Blue / Bubblegum	50/cs



1471-50



501

Urinal Screen with Block Holder

Add a 3-4 oz. block to this urinal screen for long-lasting deodorization.

- Not affected by harsh chemicals
- One size fits most urinals
- Prevents clogged drains

ITEM	DESCRIPTION	CS QTY
501	Blue	50/cs

Urinal Screen with ParaFree Block

Cleans and deodorizes up to 1200 flushes.

- Strong sudsing action assures sanitation
- Built-in foaming action

ITEM	DESCRIPTION	CS QTY
9480G	Green Apple / Blue Indicator	12/bx; 6 bx/cs
9400C	Cherry / NO Blue Indicator	12/bx; 6 bx/cs
9403M	Mint / NO Blue Indicator	12/bx; 6 bx/cs
9480NF	No Fragrance	12/bx; 6 bx/cs
9480S	Spice / Blue Indicator	12/bx; 6 bx/cs



9480S



9423

3 oz. Urinal Toss Block Blue Dye

Pair with the [#501](#) urinal screen for a complete solution.

- Strong sudsing action assures sanitation; built-in hook for easy removal
- Blue dye indicator
- Built-in foaming action

ITEM	DESCRIPTION	CS QTY
9423	Blue / Cherry	20/bx; 3 bx/cs

Rim Cage with Blue Dye

Cleans and deodorizes up to 1200 flushes.

- Strong sudsing action assures sanitation; built-in hook for easy removal
- Built-in foaming action
- Fits over the rim of most toilets

ITEM	DESCRIPTION	CS QTY
9450C	Cherry	12/bx; 6 bx/cs
9450G	Green Apple	12/bx; 6 bx/cs



9450C



9587

Camphor Screen and Blocks

Camphor Cherry Fragrance that is safe to handle and lasts 30 days

- Triple action cleaner and deodorizer with Enzyme
- Air soluble replacement for para products
- VOC Compliant in all 50 states

ITEM	DESCRIPTION	CS QTY
9587	Cherry Screen with Block	12/cs
9594	Cherry Block	12/bx; 12 bx/cs

Deodorant Cabinets



300

Still Super Deodorant Wall Cabinet

Accommodates 16-oz. and 24-oz. deodorant blocks.

- Non-motorized cabinet
- 100% Polypropylene; modern styling
- Unique living hinge and locking device

ITEM	DESCRIPTION	CS QTY
300	White	12/cs

Motorized Super Deodorant Wall Cabinet with Fan

Accommodates gels, liquids, and deodorants.

- 100% Polypropylene; modern styling
- Unique living hinge and locking device
- Battery not included

ITEM	DESCRIPTION	CS QTY
313	White	12/cs
317	Black	12/cs



313

Odor Guard Drip Systems



390

Odor Guard™ Drip Dispenser

Automatically dispenses odor counteractant into urinals and toilet bowls.

- Batteries not required
- Provides 24 hour protection
- Each dispenser comes complete with hardware
- Replacement parts available: Bottle - [#390B](#), Cap - [#390C](#), Key - [#390K](#), Tubing (12) - [#390T](#)

ITEM	DESCRIPTION	CS QTY
390	White	6/cs

Odor Guard™ Starter Kit

Starter kit contains one dispenser and one 32 ½ oz. bottle of concentrate.

- Good for one complete installation
- Services a toilet or urinal for one complete year
- Provides 24-hour protection



390SK

ITEM	DESCRIPTION	CS QTY
390SK	Cherry	1/cs

Odor Guard™ 32 oz. Ready-to-Use Counteractant

Each bottle of counteractant lasts 28-30 days.

- Easy to install
- Neutralizes odors at source
- No need for messy refills

ITEM	DESCRIPTION	CS QTY
3910B	Cherry	6/cs



3910B

Odor Guard™ 32 ½ oz. Concentrate Counteractant

Services one unit for one complete year with concentrated fragrance.

- Neutralizes odors and prevents buildup of bacteria in plumbing
- Comes with 13 wicks
- Suggested use of 1 oz. (one cap-full) to 30 ½ oz. of water



391B

ITEM	DESCRIPTION	CS QTY
391B	Cherry	12/cs

Sanitary Napkins & Tampons



25130973

Naturelle® Maxi Pads

Maxi pads with leakage control channels

- Individual plastic wrapping
- Pads folded in half
- These unscented pads have a cloth like cover

ITEM	DESCRIPTION	CS QTY
25030073	Pantyliners	1 ea/bx; 200/cs
25130973	Maxi Pad #4	1 ea/bx; 250 bx/cs
25131073	Maxi Pad #8 Ultra-Thin	1 ea/bx; 250 bx/cs
25169798	Maxi Pad #4 Ultra-Thin with Wings	1 ea/bx; 200/cs
25189973	Maxi Pad Plus #4 with Wings	1 ea/bx; 250/cs

Naturelle® Tampons

Flushable Cardboard Applicator Tampon.

- 100% Biodegradable
- ****Please see the Toxic Shock Syndrome Warning Documentation in Resource Tab**



ITEM	DESCRIPTION	CS QTY
25176488	Naturelle® Tampons	500/cs
25176598	Naturelle® Tampons	200/cs

25176488



25160273

Naturelle® Convenience Pack

Convenience Pack is designed for use in the Dual Vendor Hygiene Dispenser.

- Includes: 50 #4 Naturelle® Maxis & 50 Naturelle® Tampons
- Flushable and easy to use card board applicator tampons
- Individually wrapped folded maxi pads
- ****Please see Toxic Shock Syndrome Warning documentation in the Items Resource tab for tampons**

ITEM	DESCRIPTION	CS QTY
25160273	Convenience Pak	1/cs



25189990

Non-Vended Feminine Care Items

No vending machine, no problem, we have large quantity bulk pack items.

- Individual plastic wrapped unscented napkins
- Flushable and easy to use card board applicator tampons
- Perfect for large institutions
- ****Please see Toxic Shock Syndrome Warning documentation in the Items Resource tab for Tampons**

ITEM	DESCRIPTION	CS QTY
25130990	#4 Maxi Pad	48/pk; 17 pks/cs
25177988	Tampons	500/cs
25189990	#4 Plus Maxi w/ Wings	39 ea/bg; 24 bg/cs

Personal Care Vendors

J1 Feminine Dual Dispenser with a 25 Cent, Token or Free Coin Mechanism

Great dispenser size for smaller offices.

- White Enamel Dual #4 Napkin and Tampon Vendor
- Choose from 3 Dispensers, 25 Cent, Free or Token Coin Mechanism
- All Metal parts for simple, long-lasting dispensing
- ADA Compliant
- Replacement Part Available: #[25173200](#) - Key



25190900

ITEM	DESCRIPTION	CS QTY
25190900	12 Pads / 19 Tampons with Coin Mechanism	1/cs
25190900FREE	12 Pads / 19 Tampons with Free Mechanism	1/cs
25190900TOKEN	12 Pads / 19 Tampons with Token Mechanism	1/cs



25191200

J10 Feminine Triple Dispenser View Window with a 25 Cent, Token or Free Coin Mechanism

20 gauge steel dispenser adds a streamlined clean appearance.

- 3 Chambers to hold 24 Tampons, 32 #4 Napkins or Pantyliners
- Choose from 3 Dispensers, 25 cent, Free or Token coin mechanism
- White Enamel Triple Pad and Tampon Vendor
- ADA Compliant
- Replacement Part Available: #[25173200](#) - Key

ITEM	DESCRIPTION	CS QTY
25191200	3 chambers; Coin Mechanism	1/cs
25191200FREE	3 chambers; Free Mechanism	1/cs
25191200TOKEN	3 chambers; Token Mechanism	1/cs



25191000

J6-RC White Feminine View Window Dual Dispenser with a 25 Cent, Token or Free Coin Mechanism

20 gauge steel dispenser adds a streamlined clean appearance.

- Dual chamber #4 Napkin and Tampon dispenser
- Choose from 3 Dispensers, 25 Cent, Free or Token Coin Mechanism
- White enamel
- ADA Compliant
- Replacement Part Available: #[25173200](#) - Key

ITEM	DESCRIPTION	CS QTY
25191000	17 Pads/26 Tampons; Coin Mechanism	1/cs
25191000/FREE	17 Pads/26 Tampons; Free Coin Mechanism	1/cs
25191000TOKEN	17 Pads/26 Tampons; Token Coin Mechanism	1/cs

J6SS-RC Stainless Steel Feminine Dual SS Dispenser with a 25 Cent, Token or Free Coin Mechanism

A durable 304 stainless steel body with high-quality satin finish.

- Built in sight window for closely monitoring your product levels
- Choose from 3 Dispensers, 25 Cent, Free or Token Coin Mechanism
- Dual chamber #4 Napkin and Tampon dispenser
- ADA Compliant
- Replacement Part Available: #[25173000](#) - Key

ITEM	DESCRIPTION	CS QTY
25191100	17 Pads / 26 Tampons; Coin Mechanism	1/cs
25191100FREE	17 Pads / 26 Tampons; Free Mechanism	1/cs
25191100TOKEN	17 Pads / 26 Tampons; Token Mechanism	1/cs



25191100



25160100

J1 RSVP Plus Feminine Dual Dispenser with a 25 Cent, Token or Free Coin Mechanism

J1 dispenser and convenient pack together as starter pack.

- J1 Dispenser with a Window to closely monitor your supply levels
- Choose from 2 Dispensers, 25 Cent or Free Mechanism
- Includes: 50 #4 Naturelle Maxis & 50 Naturelle Tampons
- ADA Compliant
- Replacement Part Available: #[25173000](#) - Key

ITEM	DESCRIPTION	CS QTY
25160100	12 Pads / 19 Tampons; Coin Mechanism	1/cs
25160100FREE	12 Pads / 19 Tampons; Free Mechanism	1/cs



25191500

Electronic Feminine Hygiene Dispenser

Easily dispense sanitary napkins and tampons with the push of a button.

- Product quantity indicator ensures stock level is known without the need to open the vendor
- Programmable passcode allows product to be dispensed at no charge with the use of a four-digit passcode
- Programmable pricing-product chambers can be programmed with different prices (free or increments of 25 cents)
- White enamel, all metal construction provides easy cleaning and durable, long-lasting performance

ITEM	DESCRIPTION	CS QTY
25191500	17 Pads / 25 Tampons	1/cs

Vendor Accessories

ITEM	DESCRIPTION	CS QTY
35682600	50 Cent Token Mechanism	60/cs
35682700	Free Coin Mechanism	60/cs
35682800	Token Coin Mechanism	60/cs
35682850	Plastic Token for Coin Mechanism	60/cs



35682700

Napkin Receptacles & Liners



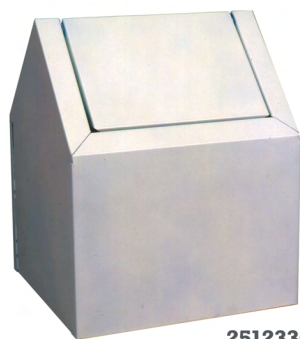
25125200

Wall Mount Feminine Napkin Receptacle

Receptacles for a sanitary method of disposing of Feminine Hygiene items.

- Units empty from the bottom
- Fits a #77 disposal liner

ITEM	DESCRIPTION	CS QTY
25125200	White Plastic	1/bx; 12 bx/cs
25032000	Stainless Steel	1/bx; 12 bx/cs
25033000	White Enamel	1/bx; 12 bx/cs



25123300

Floor Standing Feminine Napkin Receptacle

Receptacles for a sanitary method of disposing of Feminine Hygiene items.

- Spring closing swing door opens from both sides
- Fits an FL disposal liner

ITEM	DESCRIPTION	CS QTY
25123300	White Enamel	1/bx; 6 bx/cs

Safe-Use Plastic Sanitary Napkin Receptacle

Unit empties from the bottom so hands never touch the contents.

- Can be used on floor as single or double unit; wall mountable
- Bottom pulls forward allowing liner to drop into waste receptacle
- Each unit contains complimentary waxed bag

ITEM	DESCRIPTION	CS QTY
1102	White	4/cs
1103	Black	4/cs



1102



1100

Plastic Sanitary Napkin Receptacle

Unit empties from the top for easy extraction.

- Prevents the spread of disease or cross-contamination
- Can be used on floor as single or double unit; wall mountable
- Each unit contains complimentary waxed bag

ITEM	DESCRIPTION	CS QTY
1100	White	4/cs

E-Z Metal Sanitary Napkin Receptacle

Heavy-duty metal receptacle for high-traffic washrooms.

- Can be wall-mounted
- Prevents the spread of disease or cross-contamination
- Pull unit forward and liner drops in waste basket

ITEM	DESCRIPTION	CS QTY
1112	White	12/cs



1112



1115

Metal Floor Sanitary Napkin Receptacle

Floor unit fits between stalls and has opening on both sides.

- Galvanized inner container resists rusting
- Baked-on white enamel finish gives added scratch resistance and easy cleaning
- Spring-closing door

ITEM	DESCRIPTION	CS QTY
1115	White	6/cs

Sanitary Disposal Liners

Wax liners are designed for feminine receptacles to ensure sanitary clean up.

ITEM	DESCRIPTION	CS QTY
25121298	Brown	250/cs
25025088	#77 brown	500/cs
25122488	Brown Floor Unit	500/cs
25123298	Personal-w/Print	1000/cs



25121298



1101

Sanitary Napkin Waxed Bags

Brown waxed bag fits in sanitary napkin receptacles for easy disposal.

- Prevents the spread of disease by enclosing contents
- Wax coating provides moisture-resistance
- Designed to fit #1100, #1102, #1103 & #1112

ITEM	DESCRIPTION	CS QTY
1101	Brown	250/cs

Sanitary Napkin Receptacle Liners

Poly and Kraft options

- Liners for sanitary napkin receptacle
- Prevents the spread of disease by enclosing contents
- For wall mount or floor units

ITEM	DESCRIPTION	CS QTY
8505	Floor Unit Poly Liners - Buff	1000/cs
8515	Wall Mount Poly Liners - Buff	1000/cs



8505

Toilet Seat Covers



25131173

Rest Assured™ Impact Earth Seat Covers

Green Seal certified seat covers provide protection and are easy to use.

- Green Seal Certified, domestic, paper toilet seat covers.
- Made from 100% recycled paper, with 30% minimum post consumer waste.
- 100% biodegradable
- Made in the USA

ITEM	DESCRIPTION	CS QTY
25121973	½ Fold 25RA	250/pk; 10 pks/cs
25130873	½ Fold 10RA	250/pk; 4 pks/cs
25131173	¼ Fold 125Q	125/pk; 40 pks/cs
25131273	¼ Fold 200Q	200/pk; 25 pk/cs
25187973	½ Fold 50RA	250/pk; 20 pk/cs

Rest Assured™ Seat Covers

These toilet seat covers provide protection and fit a variety of dispensers.

- Self-disposing design allows the seat cover to be flushed without touching
- Levered Dispensed designed to fit in lever type dispensers

ITEM	DESCRIPTION	CS QTY
25177673	½ Fold 50RA-A	250/pk; 20 pk/cs
25183273	½ Fold 10RA-A	250/pk; 4pk/cs
25183373	½ Fold 25RA-A	250/pk; 10 pk/cs
25184473	¼ Fold RA-200-Q-I	200/pk; 25 pk/cs
25188173	Lever Dispensed	125/pk; 24 pk/cs



25177673



25160800

Rest Assured™ Seat Cover Starter Pack

Seat Cover Dispenser and packs

- Includes 2 half fold seat cover packs and 1 dispenser
- Seat covers made of 100% recycled paper, with minimum 30% post consumer waste.
- 100% biodegradable

ITEM	DESCRIPTION	CS QTY
25160800	½ Fold Starter Pack	1/cs

Toilet Seat Cover Dispensers

Rest Assured™ Seat Cover Dispensers

A variety of dispenser styles to fit your restroom needs.

- Half fold dispensers available in plastic and metal
- Quarter fold dispenser available in plastic

ITEM	DESCRIPTION	CS QTY
25131500	White Plastic 1/4 Fold	1/bx; 10 bx/cs
25131700	Chrome Metal ½ Fold	1/cs
25131800	White Metal ½ Fold	1/cs
25131900	Smoke Plastic ½ Fold	1/cs
25132000	White Plastic ½ Fold	1/cs



25131700



1120

Toilet Seat Cover Dispenser

Wall-mountable to hold this washroom essential.

- Mounted by two-way tape or screws
- Plastic dispensers hold 2 of the 250/pk total of 500 seat covers
- Chrome-plated dispenser (#[1121](#)) holds 250 half-fold toilet seat covers

ITEM	DESCRIPTION	CS QTY
1120	White	2/cs
1121	Chrome	12/cs
1122	Black	2/cs

Infant Care



1170

Baby Changing Table

Table meets both ASTM and ADA requirements and can hold up to 50 pounds.

- Includes safety strap for security; hidden hinges prevent pinch points
- Built-in liner storage; Item ships complete with mounting hardware and instructions

ITEM	DESCRIPTION	CS QTY
1170	Baby Changing Table - Gray	1/cs

Diaper Station Liner

A durable moisture-proof disposable liner to keep any table sanitized.

- 2 ply liner, made from approx. 10# basis weight paper, with approx. 0.7 mil clear poly film
- Chemical-free and moisture-proof
- Poly-backed liners provide full coverage ; 6 5/8" x 4 5/8" Folded
- Liners are 100% recyclable; made of 3-ply biodegradable paper



25130288

ITEM	DESCRIPTION	CS QTY
25130288	White Liner	500/cs



25184687

Baby Wipes

A fragrance free baby wipe.

- Contains aloe and is gentle to skin
- Alcohol free; non flushable

ITEM	DESCRIPTION	CS QTY
25184687	Baby Wipes	80 /pk; 12 pk/cs

Soap Dispensers



9325

Foam-eeze® Bulk Foam Soap Dispenser with Refillable Bottle

Dispenser with refillable bottle and sight window, complements any decor.

- Durable ABS construction
- Key lock for maximum security or optional universal access
- ADA compliant push bar; sight window indicates level of soap remaining
- 1000 ml (34 oz.) capacity; dispenses 0.7 ml of foamed liquid per stroke

ITEM	DESCRIPTION	CS QTY
9325	White / Gray	12/cs
9326	Black / Gray	12/cs

Foam-eeze® Bulk Foam Sensor Soap Dispenser

1000 ml (34 oz.) capacity; dispenses 0.7 ml of foamed liquid per stroke.

- Made of durable ABS for extended lifetime
- Key lock for maximum security; mount 12" above counter surface
- Dispenser requires four size "C" alkaline batteries: not included

ITEM	DESCRIPTION	CS QTY
9327	White	12/cs
9328	Metallic	12/cs



9327



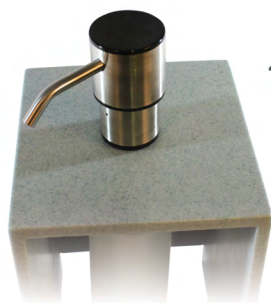
9335

Bulk Foam Soap Dispenser

The ClearVu™ and the Encore® bulk foam soap dispensers offer a unique water-resistant top, curved design, and see-thru tank.

- Made out of tough and durable ABS and SAN plastic for extended lifetime
- See-thru tank; reservoir is removable from back plate for easy cleaning
- See-thru tank; 880 ml (30 oz) and 1360 ml (46 oz) available

ITEM	DESCRIPTION	CS QTY
9335	Encore® 880 ml- White	12/cs
9336	Encore® 880 ml - Gray	12/cs
9344	ClearVu™ 1360 ml - White	12/cs
9345	Clearvu™ 1360 ml - Gray	12/cs



4044

Counter Mount Foam Soap Dispenser

1000 ml (34 oz.) capacity; dispenses 1.0 ml per stroke.

- Top fill design is vented to allow for easier filling; Height of 5" above the counter
- 4" and 6" spout versions allow for flexibility when mounting in your washroom
- Designed to work with a wide range of foaming soaps

ITEM	DESCRIPTION	CS QTY
4044	4" Spout	6/cs
4046	6" Spout	6/cs

Counter Mount Lotion Soap Dispenser

950 ml (32 oz.) capacity; dispenses 0.6 ml per stroke.

- Accepts liquid, antibacterial and antimicrobial lotion soaps
- Free turning 4" spout
- Meets ADA requirements; neck finish 42 ml x 15 ml

ITEM	DESCRIPTION	CS QTY
4032	Chrome Soap Dispenser	24/cs



4032

Bulk Lotion Soap Dispensers

The ClearVu™ and the Encore® soap dispensers offer a unique water-resistant top, curved design, and see-thru tank.

- See-thru tank; reservoir is removable from the back plate for easy cleaning
- Accommodates liquid and lotion soaps, except pumice
- ADA compliant push bar; excellent for sanitizer
- Dispenses approximately 1 cc per stroke
- See-thru tank; 880 ml (30 oz) and 1360 ml (46 oz) available



9331

ITEM	DESCRIPTION	CS QTY
9330	Encore® 880 ml- White	12/cs
9331	Encore® 880 ml - Gray	12/cs
9346	ClearVu™ 1360 ml - White	12/cs
9347	Clearvu™ 1360 ml - Gray	12/cs



9390

Bulk Lotion Soap Dispenser with Refillable Bottle

1000 ml (34 oz.) capacity; dispenses 0.7 ml per stroke.

- Durable ABS construction
- Key lock for maximum security or optional universal access
- ADA compliant push bar; sight window indicates level of soap remaining

ITEM	DESCRIPTION	CS QTY
9390	White	12/cs
9391	Black	12/cs

Triad Soap Dispenser

1475 ml (50 oz.) capacity; dispenses 0.9 ml or more per stroke.

- Works with liquid, lotion, antimicrobial, antibacterial, and antiseptic soaps.
- Versatile, push plunger valve; Meets ADA requirements
- Removable back plate; Hidden security key lock prevents vandalism

ITEM	DESCRIPTION	CS QTY
9352	Gray, See-Thru	12/cs
9356	Black, See-Thru	12/cs



9354



4020

Stainless Steel Soap Dispenser

Heavy duty stainless steel design for maximum durability in any environment.

- 21-gauge stainless steel tank; brushed chrome finish
- Tamper and theft-proof; Can be used with antimicrobial soap
- Use with lotion soaps
- 1150 ml (40 oz.) capacity; dispenses 0.6 ml per stroke
- Site globe helps user manage soap fill levels

ITEM	DESCRIPTION	CS QTY
4020	Horizontal	24/cs
4040	Vertical	24/cs



4047

Metal Bulk Soap Dispenser

1380 ml (47 oz.) capacity; dispenses 0.6 ml per stroke.

- Use with lotion soaps
- Stainless steel tank with attractive, modern looking design
- Tamper and theft-proof; top fill with service key

ITEM	DESCRIPTION	CS QTY
4047	Silver	12/cs

Metal Powder Soap Dispenser

950 ml (32 oz.) capacity.

- 4" Dia. opening for top-fill capability
- Service key
- Chrome-plated inside and out

ITEM	DESCRIPTION	CS QTY
4010	Chrome	24/cs



4010



628-28

Pumpette

Wall-mountable bracket and pump; dispenses 1.8 ml per stroke.

- Complete unit with pump screwed onto bracket
- Bracket has 28mm thread on top and bottom
- #[628-28](#) includes #62828B bracket and #[906A](#) pump

ITEM	DESCRIPTION	CS QTY
628-28	Pumpette - White	6/cs

Lotion and Grit Lotion Soap Dispenser

Dispense traditional lotion soap, as well as most pumice, grit and d-limonene.

- Accommodates #[1700](#) 1-gallon flat-top jugs
- Great for industrial settings
- Inner dispenser cylinder constructed of stainless steel

ITEM	DESCRIPTION	CS QTY
1310	Dispenser - Gray / Black	10/cs



1310

Toilet Paper Dispensers



2519

ClearVu® Double Roll Toilet Tissue Dispenser

Dispenses universal rolls with diameter up to 5.3" and width up to 4.5"

- Double latch key lock
- Heavy gauge metal back; see-thru plastic front

ITEM	DESCRIPTION	CS QTY
2519	Smoke	6/cs

ClearVu® Twin 9" Jr. Jumbo Dispenser

Dispenses all universal brands of 9" tissue with cores from 3 1/4" - 3 3/8".

- Sliding door prevents access to spare roll before first roll is depleted
- Double latch key lock; durable plastic construction
- Replacement Parts Available: Key - [#4090K](#), Key Knob - [#4090KK](#)

ITEM	DESCRIPTION	CS QTY
2529	Smoke	4/cs



2529



2539

ClearVu® Single 9" Jr. Jumbo Toilet Tissue Dispenser

Dispenses all universal brands of 9" tissue with cores from 2 1/4" - 3 3/8"

- Double latch key lock
- Durable plastic construction

ITEM	DESCRIPTION	CS QTY
2539	Smoke	6/cs

Toilet Tissue Dispensers

Chrome finished 18 gauge steel makes these dispensers extremely durable.

- Self-locking mechanism
- 4 1/2" profile from the wall
- Chrome metal finish

ITEM	DESCRIPTION	CS QTY
2500	Single Roll - Dispenser	12/cs
2501	Double Roll - Dispenser	12/cs



2501

Towel Dispensers



5015

Clearvu® Hands-Free Roll Towel Dispenser

Dispense non-perforated roll towels up to 8" (21cm) diameter and 8" (21cm) wide.

- Auto cut mechanism provides 11" sheets; key lock
- No levers, cranks or bottoms to touch, reducing the risk of cross-contamination
- Requires no batteries making it a "greener" hands free unit

ITEM	DESCRIPTION	CS QTY
<u>5015</u>	Smoke / Beige	1/cs

Clearvu® Hands-Free Towel Dispenser

Dispenses non-perforated roll towels 8" (21cm) diameter and 8" (21cm) wide.

- Automatic touchless dispenser prevents cross contamination
- Adjustable time delay 1, 2, or 3 seconds, sheet length 9", 12" or 15"
- Locking unit comes with key
- Low battery indicator; uses four "D" size batteries: not included

ITEM	DESCRIPTION	CS QTY
<u>5079</u>	Smoke	1/cs



5079

Clearvu® Plastic Roll Towel Lever Dispenser

Dispenses non-perforated roll towels 8" (21cm) diameter and 8" (21cm) wide.

- Core sizes 1 ½" to 2"; key lock
- Heavy gauge metal back; transparent plastic cover
- Meets ADA requirements



4079

ITEM	DESCRIPTION	CS QTY
<u>4079</u>	Smoke	1/cs



4086

Clearvu® Center Pull Towel Dispenser

Unique self-adjusting nozzle allows reliable single sheet dispensing.

- Accepts the widest range of towels
- Accommodates all center pull roll diameters
- Durable, high impact resistant plastic construction

ITEM	DESCRIPTION	CS QTY
4086	Smoke	1/cs

Clearvu® Combo Towel Dispenser

This versatile dispenser holds 300 C-fold or 500 multi-fold towels.

- Transparent plastic cover; durable metal back
- Chemical-resistant
- Key lock

ITEM	DESCRIPTION	CS QTY
4089	Smoke	6/cs



4089



4099

Clearvu® Push Bar Roll Towel Dispenser

Dispenses stub roll towels 8" (21cm) diameter and 8" (21cm) wide.

- Automatic transfer system for stub roll; max core size is 2" for the roll
- Towel cabinet features full push bar to dispense paper
- Meets ADA requirements when mounted properly

ITEM	DESCRIPTION	CS QTY
4099	Smoke	1/cs

Metal Combo Towel Dispenser

This versatile dispenser holds 300 C-fold or 500 multi-fold towels.

- Dispensing slot is protected by rolled edge
- Heavy gauge metal
- Double latch key lock for safety

ITEM	DESCRIPTION	CS QTY
4090W	Off-White	6/cs



4090W



4075W

Metal Roll Towel Dispenser

Accepts multiple roll widths, adjustable guides for 8", 8 ½", 9", 9 ½".

- For rolls 8" in diameter
- Heavy gauge metal; baked enamel finish
- Double latch, all metal key lock for safety

ITEM	DESCRIPTION	CS QTY
4075W	Off-White	1/cs

Single-Fold Metal Towel Dispenser

Constructed of heavy gauge metal for maximum durability.

- Double latch key lock for safety

ITEM	DESCRIPTION	CS QTY
4030W	Off-White	6/cs



4030W



4031C

Mini C-Fold - Multi-Fold Metal Towel Dispenser

This versatile dispenser holds C-fold or multi-fold towels.

- Attractive triple chrome plating
- Heavy gauge metal
- Double latch key lock

ITEM	DESCRIPTION	CS QTY
4031C	Chrome	5/cs

Hand Dryers



4064C

ExtremeAir® High Speed Energy Efficient Hand Dryer

Save 90% on energy and 95% vs. paper towel costs with this touchless dryer.

- Maintenance-free and vandal resistant
- UL approved; Green spec® listed; 86 decibels; reaches 95°F

ITEM	DESCRIPTION	CS QTY
4064M	White Enamel	1/cs

Toilet Plungers

Industrial Professional Plunger

Lip unfolds to create tighter fit or recesses for storage.

- Designed for toilets and drains
- Full pressure blows through clogs
- Cup compresses at any angle

ITEM	DESCRIPTION	CS QTY
9200	Black / Wood	6/cs



9200



9205

Deluxe Professional Plunger

Innovative bellow design provides more water pressure per push.

- Virtually splash-proof
- 2 3/4" Diameter bellows opening
- Use to remove water from trap

ITEM	DESCRIPTION	CS QTY
9205	Black	6/cs

Toilet Bowl Mops & Caddies



201

Duralon and Deluxe Toilet Bowl Mops

12" I-beam plastic handle and polypropylene mop strands.

- Deluxe mops have full 1 oz., 5 ¾" mop head
- Duralon mops have a ¾ oz., 4 ½" mop head
- Polypropylene mop strands are acid-resistant
- Strong I-beam plastic handles are lightweight to reduce user fatigue

ITEM	DESCRIPTION	CS QTY
200	Deluxe Mop - White	100/cs
201	Deluxe Mop - Blue	100/cs
202	Deluxe Mop - Green	100/cs
203	Deluxe Mop - Red	100/cs
204	Duralon Mop - White	100/cs
205	Duralon Mop - Blue	100/cs
206	Duralon Mop - Green	100/cs
207	Duralon Mop - Red	100/cs

Standard Toilet Bowl Brush

Cream colored Tampico bristles twisted in wire with a sturdy plastic handle.

- Resists most common cleaning solvents and chemicals
- Hole in end of handle for hanging
- Bristle head length 6-¾"

ITEM	DESCRIPTION	CS QTY
220	Natural / Plastic	12/cs



220

Deluxe Scratchless Bowl Brush and Caddy

Caddy provides easy storage for the brush; keeps maid carts cleaner.

- All plastic brush cleans without scratching like conventional wire brushes
- Chemical resistant & resists matting
- Caddy allows for lingering chemical & water drainage in its built-in reservoir

ITEM	DESCRIPTION	CS QTY
333	Bowl Brush & Caddy - White	12/cs
334	Bowl Brush Only - White	12/cs



333



3600

Cone Bowl Mop

Friction-fit cone allows for removal of excess liquid from the mop head.

- Heavy-duty round handle
- 2-in-1 no-leak cone tool can be removed and used as funnel
- 5 ½" Diameter polypropylene strands

ITEM	DESCRIPTION	CS QTY
3600	White	50/cs

Value-Plus Cone Bowl Mop

An inexpensive but well-built tool for the cleaning professional.

- Cone moves freely over mop head to remove excess liquid
- 4 ½" Diameter polypropylene strands
- Sturdy plastic handle

ITEM	DESCRIPTION	CS QTY
3605	White	50/cs



3605

Stainless Steel Detail Brush

Stainless steel bristles and a plastic handle for heavy cleaning.

- Great for cleaning in tight areas
- Ergonomic handle
- 7" Overall length



37016

ITEM	DESCRIPTION	CS QTY
37016	Silver / Black	36/cs

Tile and Grout Brush

When deep cleaning washrooms, this brush is essential.

- Three rows of nylon bristles
- 9" Plastic handle with hang-up hole
- 3 ½" Brush length

ITEM	DESCRIPTION	CS QTY
225	White / White Plastic	12/cs



225



103

Super Toilet Bowl Caddy

Conveniently holds quart bottle and bowl mop.

- Locking strap holds 32 oz. bottles of cleaner snugly
- Hinged lid keeps mop hidden and corrosive fumes contained
- Comfortable carrying handle

ITEM	DESCRIPTION	CS QTY
100	White	12/cs
101	Blue	12/cs
103	Red	12/cs

Value-Plus™ Toilet Bowl Caddy

Store all types of bowl mops including cone mops.

- Comfortable carry handle; 24 oz capacity
- Wide sloping rim to prevent spillage when storing bowl mop
- A convenient caddy that fits in the GatorMate Portable Caddy #[1850](#)

ITEM	DESCRIPTION	CS QTY
150	White	12/cs



150

Inspection Tools



7416

Pocket Sized Ultraviolet Flashlight

Heavy duty metal case for durability.

- Medium and high settings; highly focused beam works with the lights on
- Illuminates areas that need to be sanitized
- Bulb operates on three 'AAA' batteries: not included

ITEM	DESCRIPTION	CS QTY
7416	Black	100/cs

Inspection Lite

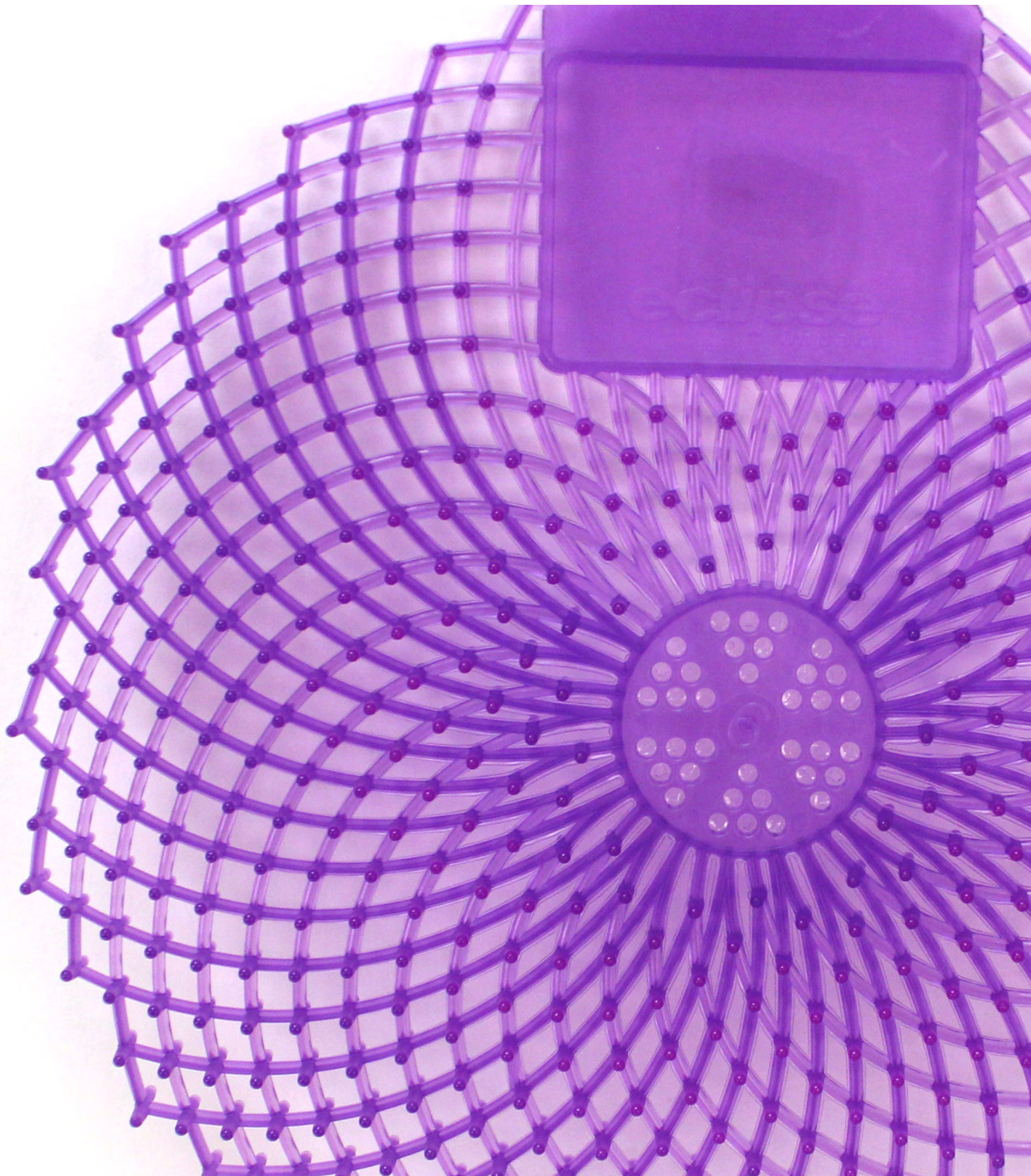
Useful for housekeepers and maintenance personnel.

- Inspect toilets and urinals for cleanliness
- Made of polystyrene
- Requires one 'AA' battery: included

ITEM	DESCRIPTION	CS QTY
2100	White	12/cs



2100



impact
Everything.

2840 Centennial Road
Toledo, Ohio 43617-1831

Phone: 419.841.2891
Toll Free: 800.333.1541
Fax: 800.333.1531

impact-products.com

© 2019 Impact Products, LLC

WASH1911