



Microfiber

**Impact**  
Everything.

# Microfiber

<b>Microfiber Mops &amp; Accessories .....</b>	<b>3</b>
<b>Microfiber Products .....</b>	<b>16</b>
<b>Dust Mops, Frames &amp; Handles .....</b>	<b>23</b>

## Why Clean with Microfiber from Impact Products?

Microfiber is an innovative textile that has revolutionized the way we clean. Renowned for its high absorption properties and its ability to clean using only water, without chemicals, it is also praised as a washable, reusable cleaning cloth that is safe to use on any surface. Microfiber is an extremely effective, economic, and earth-friendly way to clean your facilities from top to bottom. With so many benefits, Microfiber from Impact Products will quickly become the most versatile, trusted weapon in your war against dirt, grime, and bacteria.



# Microfiber Mops & Accessories



LFMTKIT

## Microfiber Starter Pack Kit

Start a new microfiber program or resupply a variety of items with this kit.

- Kit includes:
- Mopping Items: 1 - [LFSO100](#) Extension handle; 1 - [LFMO18](#) Mop Holder; 3 - [LWBS18](#) Scrubber mops; 2- [LFFD18](#) Dust mops
- Cleaning Items: 2 - [LFK300](#) Green MicroFiber Cloths; 2 - [LFK100](#) Blue microfiber cloths; 1 - [HDCOMP](#) High Duster

ITEM	DESCRIPTION	CS QTY
<a href="#">LFMTKIT</a>	Multi-Color	1/cs

## Microfiber Bucket and Strainer Combo with Wheels

Durable plastic bucket is designed to accommodate up to 18" pads.

- Ships with top shelf strainer for light wringing
- Ergonomic handle for easy lifting and pouring



LF128A

ITEM	DESCRIPTION	CS QTY
<a href="#">LF128A</a>	Blue	1/cs
<a href="#">7949</a>	Replacement Casters - Gray	4/bg; 120 bg/cs

## Microfiber Top Down Charging Bucket

Lower the risk of cross-contamination by tackling new areas with a fresh pad.

- Water-tight lid allows for splash-free transport
- Ergonomic handle for easy lifting and pouring
- Optional 3" casters available, item #[7949](#)



LF328A

ITEM	DESCRIPTION	CS QTY
<a href="#">LF328A</a>	Blue	4/cs

## Microfiber Top Down Charging Bucket with Strainer

Durable plastic bucket is designed to accommodate up to 18" pads.



LF228

- Fits on maids carts and most microfiber cleaning trollies
- Includes sealable lid and strainer
- 6 gallon capacity with graduations
- For use with all 18" Microfiber flat mops

ITEM	DESCRIPTION	CS QTY
<a href="#">LF228</a>	Grey	1/cs
<a href="#">2021C</a>	2" Casters	4/bg

## Microfiber Flat Wet Mops

Polypropylene scrubbing strips make deep cleaning easier and more complete.

- A layer of microfiber for fluid retention makes it more bacteria resistant than traditional foam
- Excellent launderability
- Available in four colors for coding systems: red, yellow, green and blue



LWYS18

ITEM	DESCRIPTION	SIZE	CS QTY
<a href="#">LWBS13</a>	Blue	13" L X 5" W	12/bg; 10 bg/cs
<a href="#">LWBS18</a>	Blue	18" L X 5" W	12/bg; 10 bg/cs
<a href="#">LWBS24</a>	Blue	24" L X 5" W	12/bg; 10 bg/cs
<a href="#">LWGS13</a>	Green	13" L X 5" W	12/bg; 10 bg/cs
<a href="#">LWGS18</a>	Green	18" L X 5" W	12/bg; 10 bg/cs
<a href="#">LWGS24</a>	Green	24" L x 5" W	12/bg; 10 bg/cs
<a href="#">LWRS18</a>	Red	18" L x 5" W	12/bg; 10 bg/cs
<a href="#">LWRS24</a>	Red	24" L X 5" W	12/bg; 10 bg/cs
<a href="#">LWYS18</a>	Yellow	18" L X 5" W	12/bg; 10 bg/cs



LF0011

### Microfiber Looped Wet Mops

Perfect for general purpose jobs, these looped wet mops are highly versatile.

- Low abrasive wet pads are perfect for smooth surfaces
- No foam inner layer, only additional layers of microfiber for greater absorbency
- Excellent launderability

ITEM	DESCRIPTION	CS QTY
<a href="#">LF0011</a>	Blue	12/bg; 10 bg/cs
<a href="#">LF0012</a>	Green	12/bg; 10 bg/cs
<a href="#">LF0017</a>	Blue	12/bg; 10 bg/cs
<a href="#">LF0018</a>	Green	12/bg; 10 bg/cs

### Microfiber 16" Pocket Mop Frame

Pair this pocket mop frame with the [CHO246](#) or [LFSO100](#) handle.

- Push bar operation, universal adaptor with compression nut
- Allows "no touch, hands-free" attachment and removal of pocket mops
- Fits most competitive 16" pocket microfiber mops



LPMGY16

ITEM	DESCRIPTION	CS QTY
<a href="#">LPMGY16</a>	Gray	12/cs



LFPB16

### Microfiber Pocket Scrubber Mop with Fringe

Equally suited for either wet or dry mopping, multiple colors to organize use.

- Polypropylene scrubbing strips for better deep grout line cleaning
- Looped fringe picks up large particles of dust and debris
- Has an additional layer of microfiber for better fluid retention

ITEM	DESCRIPTION	CS QTY
<a href="#">LFPB16</a>	Blue	12/bg; 10 bg/cs

### 100% Polyester White Loop Mop

A versatile mop that can be used for dry or wet mopping.

- Larger, thick looped wet mop for heavy soils
- Able to be used for wall washing
- Large loops for larger soil capacity



3177

ITEM	DESCRIPTION	CS QTY
<a href="#">3177</a>	White	12/bg; 10 bg/cs



LLPR16

### Microfiber Pocket Mop with Long Loop

Made of looped microfiber, can be used for wet or dry mopping.

- True polyester/polyamide microfiber blend cleans better than 100% polyester product
- Covers more square footage than short pile threads
- Available in four colors for color coding systems

ITEM	DESCRIPTION	CS QTY
<a href="#">LLPB16</a>	Blue	12/bg; 10 bg/cs
<a href="#">LLPG16</a>	Green	12/bg; 10 bg/cs
<a href="#">LLPR16</a>	Red	12/bg; 10 bg/cs
<a href="#">LLPY16</a>	Yellow	12/bg; 10 bg/cs

# How to Use

## MICROFIBER WET MOPS

**1.** Proceed with pre-moistened mop heads (white side up) to bucket filled with recommended 150- 200cc of water and chemical per mop. Press mop so Velcro® system fastens.

Proceda con los cabezales de trapeadores previamente humedecidos (lado blanco hacia arriba) al cubo lleno con 150-200 cc de agua y agente químico por trapeador, según lo recomendado. Presione el trapeador para que quede sujeto el sistema Velcro®.



**2.** Begin by mopping edge of baseboard from front to back of room. At far edge of room, begin mopping in recommended figure "8" pattern. Mop restrooms last.

Empiece por trapear las orillas del zócalo de adelante hasta atrás en el cuarto. En el extremo del cuarto, empiece a trapear en la forma de ocho recomendada. Trapee los baños en último lugar.



**3.** Place feet on each edge of wet mop and then pull up or rotate mop handle while mop frame begins to pull away from mop. Pull mop from frame and place in soiled laundry bag.

Ponga los pies en cada borde del trapeador mojado y luego mueva hacia arriba o gire el mango del trapeador mientras el armazón empieza a alejarse del trapeador. Saque el trapeador del armazón y póngalo en la bolsa para el lavado.





3159

### Microfiber Flat Wet Mop with Scrubber Strips

Designed to combat heavy debris and dried-on messes.

- Plastic scrubbing strips add texture to loosen dirt and break surface tension
- Looped end mop
- Microfiber specially designed to hold and release finish for even coat

ITEM	DESCRIPTION	CS QTY
<a href="#">3159</a>	White / Green	12/bg; 10 bg/cs

### Microfiber Flat Finish Mop

Specially designed to hold and release finish for even coat.

- Trapezoid shape for easy application in corners
- Blue microfiber strips are more rigid and help smooth finish
- Top quality hook & loop backing



3189

ITEM	DESCRIPTION	CS QTY
<a href="#">3189</a>	Blue/White	12/bg; 10 bg/cs

### Microfiber Trapezoid Finish Pad

Hook-and-loop backing allows this pad to pair with our microfiber bases.

- Looped end microfiber for better release of finish
- Two layers of white microfiber for better absorption
- Velcro® back
- Designed to fit holders of the bucketless handle system



LFFV18

ITEM	DESCRIPTION	CS QTY
<a href="#">LFFV18</a>	White	12/bg; 10 bg/cs

### Microfiber Disposable Pads

Disposable pads allow customers to use microfiber without laundry access.

- Excellent for anyone wanting to implement an effective disposable cleaning system
- Both 'finished' and 'unfinished' pads are 18" L x 5" W
- [LBH18DISP](#) has a finished edge to prevent unraveling
- Available in 18" length



DISP18

ITEM	DESCRIPTION	CS QTY
<a href="#">DISP18</a>	White Unfinished Edge	50/bg; 10 bg/cs
<a href="#">LBH18DISP</a>	Orange Finished Edge	50/bg; 10 bg/cs





LF0006

## Microfiber Tube Wet Mop

**Canvas headbands are extremely durable and long lasting.**

- Five times the launderability of traditional mops; textured finish loosens and holds dirt until washed
- Wide canvas headbands and tailbands are longer lasting and come in a variety of colors for coding
- Save money and improve results by converting to microfiber mops
- Priced competitively with traditional blended looped yarn mop heads, yet outperforms traditional mops in cleaning & durability

ITEM	DESCRIPTION	SIZE	CS QTY
<a href="#">LF0002</a>	Blue	Medium (400g)	12/cs
<a href="#">LF0003</a>	Blue	Large (500g)	12/cs
<a href="#">LF0005</a>	Green	Medium (400g)	12/cs
<a href="#">LF0006</a>	Green	Large (500g)	12/cs
<a href="#">LF0008</a>	White	Medium (400g)	12/cs
<a href="#">LF0009</a>	White	Large (500g)	12/cs
<a href="#">LF0021</a>	Blue	X-Large (600g)	12/cs
<a href="#">LF0022</a>	Green	X-Large (600g)	12/cs
<a href="#">LF0023</a>	White	X-Large (600g)	12/cs
<a href="#">LF0031</a>	Red	Medium (400g)	12/cs

## Microfiber Heavy Weight Tube Wet Mop

**Mesh headbands are textured for scrubbing problem areas.**

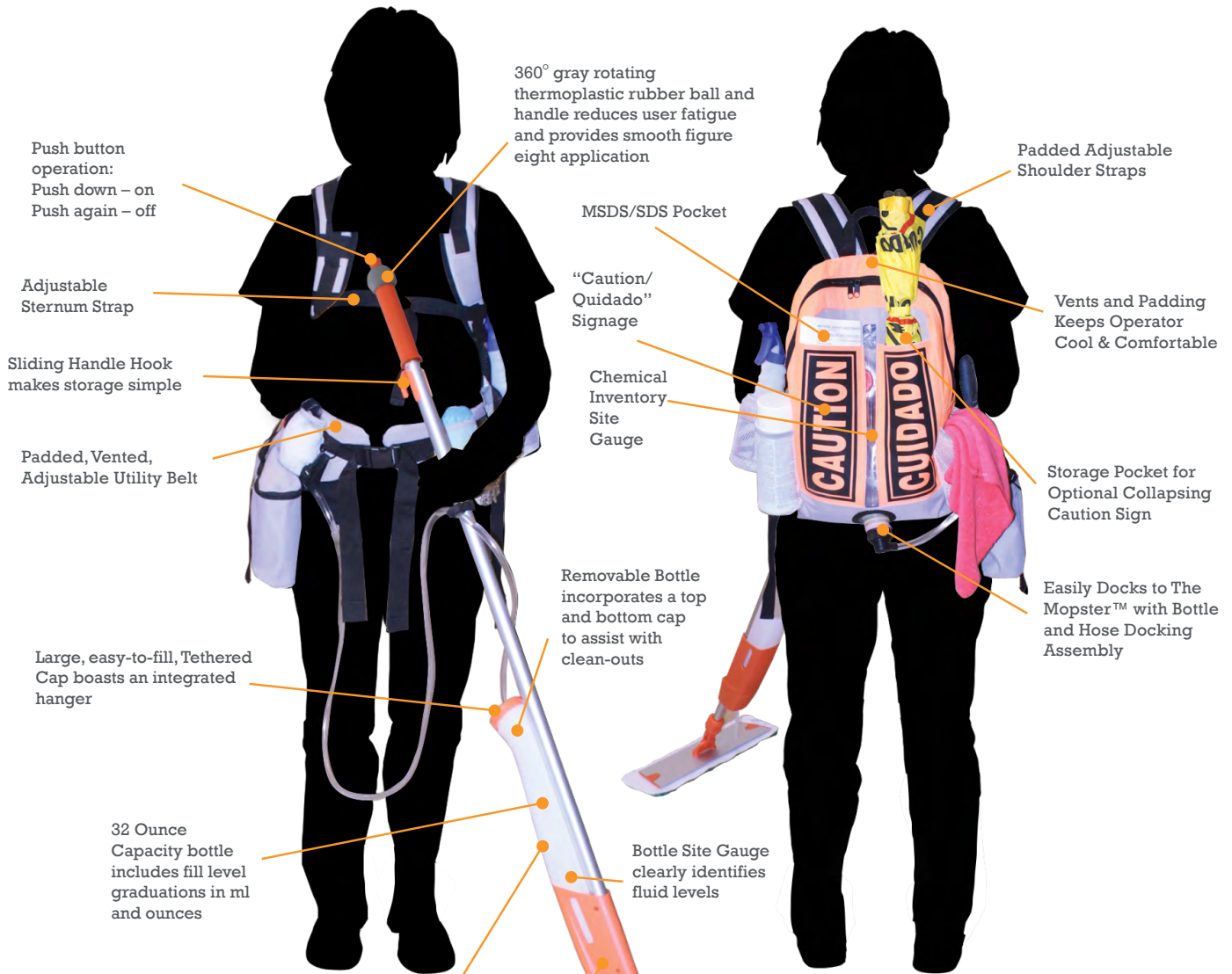
- Five times the launderability of yarn mops; textured finish loosens and holds dirt until washed
- Mesh headbands are textured for scrubbing and come in a variety of colors for coding
- Save money and improve results by converting to microfiber mops

ITEM	DESCRIPTION	SIZE	CS QTY
<a href="#">3114</a>	White	Large (500g)	12/cs
<a href="#">3117</a>	Blue	Medium (400g)	12/cs
<a href="#">3118</a>	Blue	Large (500g)	12/cs
<a href="#">3121</a>	Blue	X-Large (600g)	12/cs
<a href="#">3126</a>	Green	Large (500g)	12/cs
<a href="#">3128</a>	Green	Medium (400g)	12/cs



3118

# Features of The Mopster™ and The Mopster™ ProPack



Push button operation:  
Push down – on  
Push again – off

Adjustable Sternum Strap

Sliding Handle Hook makes storage simple

Padded, Vented, Adjustable Utility Belt

Large, easy-to-fill, Tethered Cap boasts an integrated hanger

32 Ounce Capacity bottle includes fill level graduations in ml and ounces

360° gray rotating thermoplastic rubber ball and handle reduces user fatigue and provides smooth figure eight application

MSDS/SDS Pocket

“Caution/Quidado” Signage

Chemical Inventory Site Gauge

Removable Bottle incorporates a top and bottom cap to assist with clean-outs

Bottle Site Gauge clearly identifies fluid levels

Viton Seals ensure confident operation with a variety of heavy duty chemicals

Bilingual Chemical Identification labels

Private Brand Imprint Area drives brand exposure and a customized look

Padded Adjustable Shoulder Straps

Vents and Padding Keeps Operator Cool & Comfortable

Storage Pocket for Optional Collapsing Caution Sign

Easily Docks to The Mopster™ with Bottle and Hose Docking Assembly

<b>All-Purpose Cleaner</b> Limpiador de Propósito General See Supervisor for Full Label & MSDS	<b>All-Purpose Cleaner</b> Limpiador de Propósito General See Supervisor for Full Label & MSDS
<b>Disinfectant Cleaner</b> Limpiador Desinfectante See Supervisor for Full Label & MSDS	<b>Disinfectant Cleaner</b> Limpiador Desinfectante See Supervisor for Full Label & MSDS
<b>Strong Mop Cleaner</b> Limpiador Para See Supervisor for Full Label & MSDS	<b>Strong Mop Cleaner</b> Limpiador Para See Supervisor for Full Label & MSDS
<b>Floor Shine</b> Froti Del Selloador See Supervisor for Full Label & MSDS	<b>Floor Shine</b> Froti Del Selloador See Supervisor for Full Label & MSDS
<b>Floor Finish</b> Froti Del Selloador See Supervisor for Full Label & MSDS	<b>Floor Finish</b> Froti Del Selloador See Supervisor for Full Label & MSDS
<b>With Name of Operator</b>	<b>With Name of Operator</b>

Heavy Duty Frame with 360° swivel

## The Most Versatile Mopping System Available Today!

Introducing **The Mopster™** and **Mopster™ ProPack**. Impact's **Complete Floor Care System**.

**The Mopster™ ProPack** is an all-purpose backpack system that works perfectly with **The Mopster™**, Impact's innovative microfiber bucketless mopping system. Using **The Mopster™**, the user can attach different size frames and microfiber pads to accommodate any surface or floor area.

The Mopster™ ProPack expands capacity of The Mopster™ by six times. It adds comfort, utility and allows the user to complete jobs faster while using less chemicals.

**The Mopster™ and Mopster™ Pro Pack are ideal for:**

- Schools and Universities
- Hospitals
- Big Box Retail
- Grocery Stores
- Building Service Contractors
- Arenas/Stadiums
- Movie Theaters

**The Mopster™ ProPack:**

- Uses up to 39% less floor finish
- Uses less than 80% damp mop solution than bucket and wringer
- Can cover up to 6,000 square feet per hour
- Utility belt may be used with or without backpack

Whether using the lamb's wool applicator or one of the various microfiber mop heads, the Mopster™ ProPack and the Mopster™ offer unmatched flexibility and affordability for all your cleaning needs.

**Benefits:**

- Eliminates waste water completely
- Saves \$\$ on chemicals by using only what you need
- Saves labor involved in filling, cleaning and wringing
- Shorter drying times reduce risk of slip and fall injuries
- Interchangeable frames and pads
- More consistent application of chemicals

Interchangeable components such as the easily assembled frames, mop heads and removable bottles allows the user to stock multiple cleaning/finishing options on the maid's cart or in the janitor's closet. From damp mopping to dusting, neutral cleaner to disinfectant, and hook-and-loop attaching heads to pockets, every option for every job is ready when you need it!

## Mopster™ ProPack System Performance vs. Standard Wet Mop Method

### Application Rate

	Wet Mop Method (ISSA Standard)	Mopster™ ProPack System	% Improvement
Floor Finish Application Rate	1,650 sq. ft./hr.	6,000 sq. ft./hr.	263%
Damp Mop Application Rate	5,000 sq. ft./hr.	6,000 sq. ft./hr.	20%

### Usage Rate

	Wet Mop Method (ISSA Standard)	Mopster™ ProPack System	% Improvement
Floor Finish Usage Rate	2,150 sq. ft./gallon	3,500 sq. ft./gallon	63%
Damp Mop Usage Rate	2,500 sq. ft./gallon	2,500 sq. ft./gallon	40%

- All unused chemicals remain in the self-sealing bag to minimize chemicals introduced to the waste stream. Additionally, the contained system reduces the risk of exposing the worker to any harmful chemicals
- Improved usage rate reduces overall chemical usage and packaging waste



LBH18

### Mopster® Bucketless Handle

Lightweight and modular, this system is the solution to many floorcare issues.

- Complete system includes 16" frame, 32 oz. bottle, disposable microfiber pad, and 54" handle
- Removable dispensing bottle features a wide opening for easy filling and cleanout
- Translucent, graduated dispensing bottle identifies fill level in both ounces and milliliters
- Swap-n-go modularity allows for easy switch-outs of dispensing bottles, frames, and heads
- Easy to hold ergonomic end-of-handle TPR ball swivels for smooth operation
- Easy up/down push-button activation; includes [LBH18DISP](#)
- Features a positive on/off cylinder valve. No more pinch valves!
- Includes bi-lingual chemical ID labels

ITEM	DESCRIPTION	CS QTY
<a href="#">LBH18</a>	Orange	1/cs

### Single Use Disposable Microfiber Pad and Base

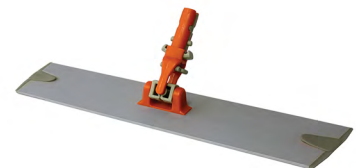
Effectively and efficiently remove tough soils, stains and organic matter on hard surfaces with or without using chemicals. The base features a less aggressive hook that will not tear the pad upon removal.

- Microbial removal
- 100% sanitizer and bleach safe
- Single use, yet durable
- Optimal chemical release
- No quat binding
- Base features standard hook backing designed for disposable microfiber pads
- Swivel Head
- Lockable base
- Constructed of aluminum and Polypropylene



LFDP18

ITEM	DESCRIPTION	CS QTY
<a href="#">LFDP18</a>	White Unfinished Edge	50/bg; 3 bg/cs
<a href="#">LFMS18</a>	Orange/Tan	6/bx; 4 bx/cs



LFMS18

## Microfiber Handles and Bases

Pair a microfiber handle with one of our various base sizes to fit your needs.

- Flat base prevents pooling when applying finish
- Swivel bases attach to the wet or dry dust pads
- Bases attach to the wet pads or dust pads by plastic teeth and can swivel to provide a greater range of use



LFMO24

ITEM	DESCRIPTION	CS QTY
<a href="#">CHO246</a>	54" Fixed Handle	6/bx; 8 bx/cs
<a href="#">LFMO13</a>	Base for 13" Pad	6/bx; 8 bx/cs
<a href="#">LFMO18</a>	Base For 18" Pad	6/bx; 8 bx/cs
<a href="#">LFMO24</a>	Base For 24" Pad	6/bx; 4 bx/cs
<a href="#">LFMO36</a>	Base For 36" Pad	6/bx; 4 bx/cs
<a href="#">LFSO100</a>	Extension Handle 40-71"	6/bx; 8 bx/cs

## Mopster® Propak Kit

The most versatile backpack available.

- Uses up to 39% less floor finish
- Can cover up to 6,000 square feet an hour
- Mopping Kit Includes: 1 - Mopster® Back Pack, 1 - Bottle & Hose Assembly
- 2 - Chemical Storage Bags, 1- Chemical Identification Label Sheet
- 2 - Mop Heads

ITEM	DESCRIPTION	CS QTY
<a href="#">LBH18BPK</a>	Mopster® Propack System	1/cs
<a href="#">LBH18BFS</a>	Bag Fill Station	1/cs
<a href="#">LBH18CSB</a>	Chemical Storage Bag	200/cs
<a href="#">LBH18FFA</a>	Lambswool Floor Finish Applicator	3/bg; 12 bg/cs
<a href="#">LBH18HAAC</a>	Bottle Assembly w/8' Hose	12/cs



LBH18BPK



LBH18B

## Mopster® Replacement Parts

Replace lost or worn parts to extend the life of your bucketless system.

ITEM	DESCRIPTION	CS QTY
<a href="#">LBH18B</a>	Bottle with Tethers and Caps	60/cs
<a href="#">LBH18F</a>	Base - Orange / Silver	24/cs
<a href="#">LBH18H</a>	Tether without Cap	50/cs
<a href="#">LBH18N</a>	Bottom Bottle Cap Valve	50/cs
<a href="#">LBH18VK</a>	Valve Kit	50/cs

# How to Use Microfiber Laundry

**1.** Clean the laundry machines daily, before the first use.

**2.** Separate microfiber cloths and mops from other textiles.

**3.** Wash microfiber cloths and mops in a laundry net to manage inventory.

**4.** Determine detergent and maximum load size using the chart below.\*



WASHER SIZE	MAX VOLUME	DETERGENT LOAD**	18"/45CM MOPS PER LOAD
60 lb / 27.2 kg	71.8 gal / 272 L	1.5 oz / 44.4 mL	130
<u>81.6</u> lb / 37 kg	97.8 gal / 370 L	2.0 oz / 59.2 mL	175
<u>101.4</u> lb / 46 kg	121.3 gal / 459 L	2.5 oz / 73.9 mL	<u>220</u>
125 lb / 56.7 kg	<u>150.6</u> gal / 570 L	3.1 oz / 91.7 mL	270
141.4 lb / 64.3 kg	169.6 gal / 642 L	3.5 oz / <u>103.5</u> mL	305
174.8 lb / 79.3 kg	<u>201</u> gal / 761 L	4.2 oz. 124.2 mL	375

\*Machine settings can be established by chemical provider.

\*\*Represents ½ the average manufacturer's detergent recommendation. Using full amount of detergent can result in hazy floors.

# LAUNDRY INSTRUCTIONS

---



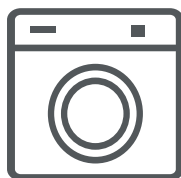
## COMMERCIAL WASHING: HOT WATER METHOD

- Wash in hot water (160°F/71°C) for 25 minutes<sup>1</sup>
- Use above chart to select appropriate capacity setting



## COMMERCIAL WASHING: COLD WATER METHOD

- Wash in cold water
- Use above chart to select appropriate capacity setting



## COMMERCIAL DRYING

- Dry cloths and mops on low heat (130°F/54°C) setting
- Store dry cloths and mops in clean storage containers.



## REQUIRED CARE

- Do not store microfiber in a washing machine overnight
- Do not use fabric softener in the wash cycle
- Do not use dryer sheets in the dry cycle
- Do not wash microfiber cloths or mops with other textiles

# TRANSPORTATION

---

## CONTAMINATED TEXTILES

- Don Personal Protective Equipment (PPE) before transferring soiled textiles into laundry machine
- Handle contaminated textiles carefully to avoid agitation
- Sort soiled microfiber cloths and mops from other textiles at the point of contamination using a mesh laundry bag

## CLEAN TEXTILES

- Remove dry textiles from the dryer immediately
- Transport clean textiles in a properly cleaned cart with a cover
- Store clean textiles for only short periods of time. Wrap clean textiles for long-term storage
- Distribute textiles back into facility

# Microfiber Products



LFK702

## Edgeless Light Weight Microfiber Cloths

**These lightweight cloths are ultrasonically trimmed to provide a seamless edge.**

- Available in our most popular colors: blue, green and yellow for coding systems.
- Ultrasonic cut without any stitching or tags to prevent scratching.
- Cost-effective and launderable

ITEM	DESCRIPTION	SIZE	CS QTY
<a href="#">LFK302</a>	Green	16" L x 16" W	12/bg;20 bg/cs
<a href="#">LFK502</a>	Blue	16" L x 16" W	12/bg;20 bg/cs
<a href="#">LFK702</a>	Yellow	16" L x 16" W	12/bg;20 bg/cs

## Microfiber Heavy Duty Mitt without Thumb

**The split fibers in this mitt create a charge that holds dust and dirt.**

- Excellent for surface dusting and cleaning of large areas
- Can be laundered; ambidextrous
- Knit cuff holds the mitt on the hand during cleaning

ITEM	DESCRIPTION	CS QTY
<a href="#">LFRMIT</a>	Blue	180/cs



LFRMIT



LFK100

## Microfiber Suede Cloth

**This cloth is specifically designed for cleaning glass and shiny surfaces.**

- Also safe for use on other surfaces for dusting or general cleaning
- Can be laundered repeatedly without degradation of material
- 4-sided surge-finished edge

ITEM	DESCRIPTION	CS QTY
<a href="#">LFK100</a>	Blue	12/bg; 18 bg/cs



# How to Use MICROFIBER DRY MOPS

1. Place dust mop on floor, gray side down. Press mop frame against mop so the Velcro® system fastens.

Ponga el trapeador para el polvo sobre el piso, con el lado gris hacia abajo. Presione el armazón del trapeador contra el trapeador de tal modo que quede sujeto el sistema Velcro®.



2. Dust floors, beginning at far edge of room and proceeding towards center in figure eight pattern.

Sacuda el polvo de los pisos, empezando en el extremo alejado del cuarto y procediendo hacia el centro en forma de ocho.



3. Place feet on each edge of dust mop and then pull up or rotate mop handle. Once mop frame begins to pull away from mop, pick up and place dust mop in soiled laundry bag.

Ponga los pies en cada borde del trapeador para el polvo y luego mueva hacia arriba o gire el mango del trapeador. Una vez que el armazón empiece a alejarse del trapeador, recoja y ponga el trapeador en la bolsa para el lavado.





LFK401

### Lightweight Microfiber Cloths

These economy cloths are a lightweight option that dry quickly after use.

- Perfect for general-purpose cleaning of a variety of surfaces
- Available in five colors for color coding by area or application
- Can be extensively laundered
- 16" x 16"; 33 grams

ITEM	DESCRIPTION	CS QTY
<a href="#">LFK301</a>	Green	12/bg; 20 bg/cs
<a href="#">LFK401</a>	Pink	12/bg; 20 bg/cs
<a href="#">LFK451</a>	Red	12/bg; 20 bg/cs
<a href="#">LFK501</a>	Blue	12/bg; 20 bg/cs
<a href="#">LFK701</a>	Yellow	12/bg; 20 bg/cs

### Microfiber Dual-Textured Bar Towel

Two sides with alternate ribbed patterns double the usefulness of this towel.

- Ribbed side has deep channels, trapping larger particles for heavy-duty clean up
- Smooth side is ideal for lighter jobs like dusting or wiping down surfaces
- Part of a Green Clean system due to less water and chemical usage
- Removes 99% of bacteria with water alone
- Synthetic fibers are resistant to bacteria growth



LFRT1000

ITEM	DESCRIPTION	CS QTY
<a href="#">LFRT1000</a>	White	12/bg; 15/bgs./cs



LFWT1000

### Microfiber Waffle Weave Bar Towel

Virtually lint-free, this woven design provides excellent surface contact.

- Absorbs more than seven times its weight in liquid, much more than conventional bar towels
- Extremely durable - will last through hundreds of wash cycles
- Microfiber is resistant to bacteria growth

ITEM	DESCRIPTION	CS QTY
<a href="#">LFWT1000</a>	White	12/bg; 15/bgs./cs

# How to Use DRY DUSTERS

- 1.** Use clean, dry microfiber cloth, mitt or duster

---

Use un paño de microfibra limpio y seco.



- 2.** Clean and wipe surface area.

---

Limpie y pase un paño por el área de la superficie.



- 3.** Once surface is clean and cloth or mitt is soiled, place in laundry bag. Duster can be used repeatedly and cleaned according to their instructions.

---

Una vez que quede limpia el área y se ensucie el paño, póngalo en la bolsa para el lavado.





## Make the Most of Your Microfiber

Utilize our Janitor's Cart ([6850](#)) as a portable station for your microfiber cleaning system!

## Premium Weight Microfiber Cloths

Microfiber cloths are a great choice for general cleaning and dusting.

- Excellent cleaning for surfaces like counter tops, porcelain, chrome, glass and wood
- Available in multiple colors for color coding by area or application
- Can be extensively laundered

LFK300



ITEM	DESCRIPTION	SIZE	CS QTY
<a href="#">LFK300</a>	Green	16" L X 16" W	12/bg; 15 bg/cs
<a href="#">LFK400</a>	Pink	16" L X 16" W	12/bg; 15 bg/cs
<a href="#">LFK450</a>	Red	16" L X 16" W	12/bg; 15 bg/cs
<a href="#">LFK500</a>	Blue	16" L X 16" W	12/bg; 15 bg/cs
<a href="#">LFK505</a>	Royal Blue	16" L x 16" W	12/bg; 15 bg/cs
<a href="#">LFK520</a>	Black	16" L x 16" W	12/bg; 15 bg/cs
<a href="#">LFK550</a>	Purple	16" L x 16" W	12/bg; 15 bg/cs
<a href="#">LFK700</a>	Yellow	16" L x 16" W	12/bg; 15 bg/cs
<a href="#">LFK970</a>	White	16" L x 16" W	12/bg; 15 bg/cs
<a href="#">LFKS300</a>	Green	12" L x 12" W	12/bg; 20 bg/cs
<a href="#">LFKS500</a>	Blue	12" L x 12" W	12/bg; 20 bg/cs
<a href="#">LFK300-36</a>	Green	16" L X 16" W	12/bg; 3 bg/cs
<a href="#">LFK500-36</a>	Blue	16" L X 16" W	12/bg; 3 bg/cs
<a href="#">LFK700-36</a>	Yellow	16" L X 16" W	12/bg; 3 bg/cs

## Mesh Laundering Bag

Perfect for containing your mopping and towel products while laundering.

- Drawstring closure secures bag contents
- Use this bag to protect your launderable cleaning items
- Synthetic material allows for quick drying

ITEM	DESCRIPTION	CS QTY
<a href="#">CH015</a>	White	12/cs



CH015

# How to Use

## 8-Sided Folds with Microfiber Cloths

**NOTES:** Color-coding can prevent cross-contamination, so assign each color of cloth to a specific area and task. Do not over-saturate cloths. Follow all established safety procedures. Don all appropriate Personal Protective Equipment (PPE).

**1.** Begin with an open, clean microfiber cloth.



**2.** Fold your microfiber cloth in half.



**3.** Fold microfiber cloth in quarters, resulting in a square-shaped pad with four layers of cloth.



**4.** Clean surfaces with the two exposed sides of the microfiber cloth. Track the side used for each surface while cleaning.



**5.** Open microfiber cloth once to change sides.



**6.** Refold to expose two fresh cleaning surfaces. Track the side used for each surface while cleaning.



**7.** Open the cloth fully once four surfaces have been used and expose four fresh surfaces.



**8.** Repeat steps 2 through 7 to use all eight sides.



# Dust Mops, Frames & Handles



LFCB60

## Microfiber Pads - Fringe Dry/Dust Mop

Upgrade to microfiber dust mopping without changing your frames & handles.

- Microfiber with fringe picks up larger dust particles.
- Envelope style canvas backing fits traditional 5" dust mop frames
- Extra padding allows for complete surface contact; gathers more dust than cotton mops
- Holds dust electrostatically and requires no treatment

ITEM	DESCRIPTION	SIZE	CS QTY
<a href="#">LFCB18</a>	Blue / Yellow	18" L X 5" W	12/bg; 6 bg/cs
<a href="#">LFCB24</a>	Gray / Green	24" L X 5" W	12/bg; 4 bg/cs
<a href="#">LFCB36</a>	Blue / Red	36" L X 5" W	12/bg; 3 bg/cs
<a href="#">LFCB48</a>	Gray / Blue	48" L X 5" W	12/bg; 3 bg/cs
<a href="#">LFCB60</a>	Gray / Blue	60" L x 5" W	12/bg; 2 bg/cs

## Microfiber Pads - Fringe Dry/Dust Mop Hook-and-Loop

These dust mops feature hook-and-loop backing, for use with microfiber bases.

- Cut-end microfiber with fringe picks up larger dust particles and trash; holds dust electrostatically
- Gathers more dust than cotton mops
- Coordinate with Microfiber bases
- Extra padding in the mop allows for complete surface contact



LFFD36

ITEM	DESCRIPTION	SIZE	CS QTY
<a href="#">LFFD18</a>	Gray / Blue	18" L x 5" W	12/bg; 8 bg/cs
<a href="#">LFFD24</a>	Gray Blue	24" L x 5" W	12/bg; 6 bg/cs
<a href="#">LFFD36</a>	Gray / Blue	36" L x 5" W	12/bg; 4 bg/cs



WDGCOM

## Microfiber Wedge Complete Mop

The perfect solution for detail cleaning and dusting tight spaces.

- Fringe around edges to increase cleaning benefits and gather large debris
- Extra padding allows complete surface contact; gathers more dust than cotton mops
- Telescopic handle for convenient height adjustment and extended reach

ITEM	DESCRIPTION	CS QTY
<a href="#">WDGCOM</a>	Complete Mop	1/cs
<a href="#">WDGFRM</a>	Metal Mop Frame	50/cs
<a href="#">WDGHDL</a>	Yellow Telescopic Handle	12/cs
<a href="#">WDGMHD</a>	Blue / Gray Wedge Mop Head	12/bg; 12 bg/cs



**impact**  
Everything.

2840 Centennial Road  
Toledo, Ohio 43617-1831

Phone: 419.841.2891  
Toll Free: 800.333.1541  
Fax: 800.333.1531

[impact-products.com](http://impact-products.com)

© 2019 Impact Products, LLC

MICRO1911