

PRODUCT GUIDE

# DUBL LIFE

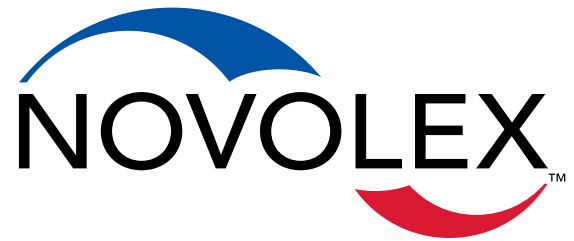


NOVOLEX™

Our Dubl Life® brand is expanding!  
For the latest updates and product  
offering, visit our website:  
[novolex.com/products/dubl-life-products](http://novolex.com/products/dubl-life-products)



# Sustainability Partnerships



Novolex™ is committed to the protection of the earth through recycling and promotion of sustainable products. We are proud to hold certificates for the following organizations:



## Forest Stewardship Council®

The FSC® promotes environmentally appropriate, socially beneficial, and economically viable management of the world's forests. The unique role of the FSC® is to bring together people, organizations and businesses to develop consensus-based solutions that promote responsible stewardship of the world's forests. Duro Bag™ uses the FSC® Trademark License C010800 for certified chain of custody products made at all Duro plants. Bagcraft Packaging™ uses the FSC® Trademark License C122272 for certified chain of custody products made at all Bagcraft plants.



The mark of responsible forestry



The mark of responsible forestry



## Rainforest Alliance®

The Rainforest Alliance® is an international nonprofit conservation organization that certifies forestry and agricultural operations, ensuring that they meet rigorous standards for the conservation of natural resources and the rights and welfare of workers and local communities. Working with the Rainforest Alliance®, Novolex has earned FSC® Chain of Custody certification for its Duro Bag lines of 100% recycled bags. The FSC® certified paper used for the manufacturing of these bags can be tracked through the supply chain including collection from the end user, sorting, paper making, transport, bag making and shipment of the finished product.



## SCS Global Services (SCS)

SCS Global Services (SCS) has been providing global leadership in third-party environmental and sustainability certification, auditing, testing, and standards development for nearly 30 years. They are accredited to provide services under a wide range of nationally and internationally recognized certification programs. Working with SCS Global Services, Novolex has earned FSC Chain of Custody certification for its Bagcraft lines of 100% recycled bags. The FSC® certified paper used for the manufacturing of these bags can be tracked through the supply chain including collection from the end user, sorting, paper making, transport, bag making and shipment of the finished product.



## How2Recycle

Novolex™ is proud to support organizations like the Sustainable Packaging Coalition (SPC) that promote industry wide sustainability initiatives such as How2Recycle the next generation of standardized recycling symbols. We are proud to work with our customers and the SPC to get the right markings on your products. Learn more at: [How2Recycle.info](http://How2Recycle.info)



# Table of Contents

What is Dubl Life®? 4

A Closer Look at Dubl Life® 5

Dubl Life® Product Life Cycle 6

Sustainability Impact 7

How Dubl Life® Compares 7

Dubl Life® Packaging 8-11

8 Dubl Life® SOS Bags

9 Dubl Life® SOS Husky Bags

10 Dubl Life® 1/6, 1/7 and 1/8 BBL Sacks **NEW!**

11 Dubl Life® Die Cut Handle, Liquor and Merchandise Bags **NEW!**

12 Dubl Life® Carryout Shopping Bags

13 Dubl Life® Bread Bags

14 Dubl Life® Pre-Printed Bags **NEW!**

14 Dubl Life® Printing Capabilities - Branding Opportunities **NEW!**

Locations and Brands 12

# What is **DUBL LIFE**?

Dubl Life® is a brand of flexible foodservice and carryout packaging made from 100% Recycled Paper.

## The Problem:

Consumers desire clear transparency to better understand what practices will drive an impact toward a sustainable future.



## The Solution:

Dubl Life® brand drives awareness of the benefits of recycling and promotes the use of packaging solutions with post consumer material content.

### RECYCLE

Recycle paper fiber products into post consumer material

### REUSE

Convert recycled post consumer fiber material into flexible packaging

### REDUCE

Create significant reduction in reliance on virgin raw material



Learn how to incorporate the Dubl Life® message into your company's branding

Contact your local Novolex sale representative at [novolex.com/contact](http://novolex.com/contact)

# Dubl Life® Branding: *A Closer Look*

**Dubl Life® logo printed** on all 6# or larger SOS Dubl Life® bags

**Dubl Life® “Box” symbol printed** on all Dubl Life® bags 5# size or smaller



**Dubl Life® packaging is made from 100% recycled FSC® chain of custody certified paper.**

The FSC® symbol and Novolex license code is printed on all Dubl Life® products to communicate our commitment to responsible forest stewardship.

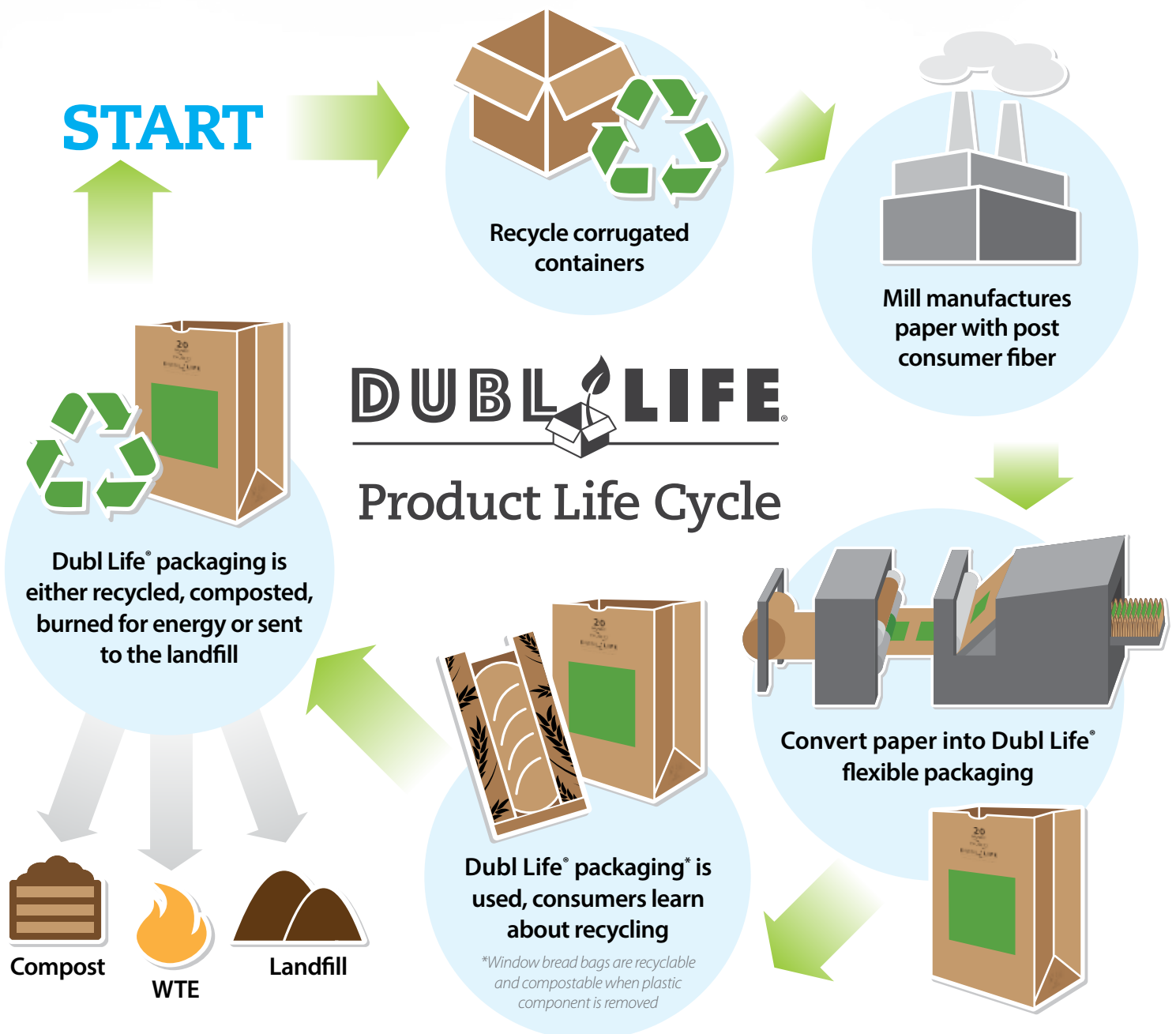


## **Forest Stewardship Council®**

The FSC® promotes environmentally appropriate, socially beneficial, and economically viable management of the world's forests. The unique role of the FSC® is to bring together people, organizations and businesses to develop consensus-based solutions that promote responsible stewardship of the world's forests.

**To learn more, visit: [www.fsc.org](http://www.fsc.org)**

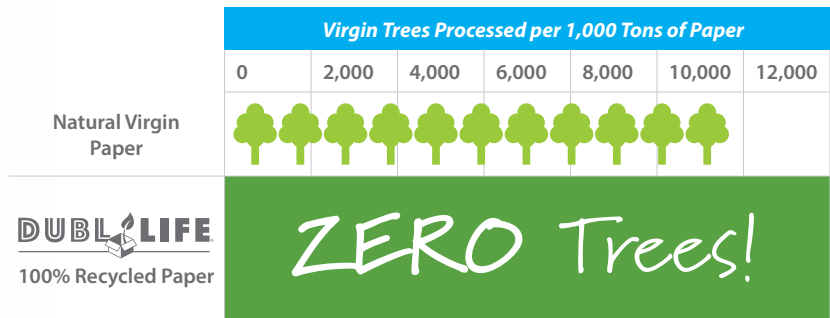
# It all starts with a recycled corrugated container: A Clean Bountiful Resource



# The Sustainable Impact of



## Reduced Reliance on Virgin Raw Material



*\*Environmental impact estimates were made using the Environmental Paper Network Paper Calculator Version 3.2. For more information visit [www.papercalculator.org](http://www.papercalculator.org).*

## How Dubl Life® *Compares*



### Recycled Natural Paper with 100% Recycled Fiber

- Made from recycled corrugated cartons
- Maximum reduction in virgin material use
- Darker shade of brown than virgin natural kraft paper
- FSC® chain of custody certified paper
- Natural kraft color promotes artisan image to packaging
- FDA Compliant paper for food contact



### Virgin Natural Kraft Paper

- Made from tree fiber which is a renewable resource
- 20% reduction in raw material waste versus virgin white fiber
- Grease resistant smooth paper for a wide variety of foodservice applications
- Natural color promotes artisan image to packaging
- FDA Compliant paper for food contact



### Virgin White Kraft Paper

- Made from tree fiber which is a renewable resource
- Grease resistant smooth paper for a wide variety of foodservice applications
- Excellent choice for custom printing multi-color designs, logos or brands
- FDA Compliant paper for food contact



# Dubl Life® SOS Bags

## PERFORMANCE FEATURES

- Made from 100% Recycled Paper
- Bags are FSC® chain of custody certified
- Self opening style (SOS) bags are an ideal choice for retail, foodservice and grocery stores

Custom  
printing  
available



Item#	UPC	Bag Size	Dimensions	Basis Weight	Bale Pack	Pack Config.	Bales/Pallet	Ti/Hi	Bale Weight (lbs.)	Bale Dimensions L x W x H	Cubic	Load Dimensions
18450	079594184502	1/2 #	3 x 1 1/8 x 5 7/8	30#	4M	8/500	56	8 x 7	20	16.5 x 12.25 x 6.5	0.76	51 x 38.5 x 48
18401	079594184014	1#	3 1/2 x 2 3/8 x 6 7/8	30#	4M	8/500	36	6 x 6	28.6	18.5 x 13.25 x 7.25	1.03	44 x 38.5 x 47.5
18402	079594184021	2#	4 5/16 x 2 7/16 x 7 7/8	30#	500	1/500	200	20 x 10	4.8	8.25 x 10.5 x 4	0.20	43 x 41.5 x 50
18403	079594184038	3#	4 3/4 x 2 15/16 x 8 3/16	30#	500	1/500	144	16 x 9	6.1	9 x 10.25 x 4.75	0.25	43 x 36.5 x 48
18404	079594184045	4#	5 x 3 1/8 x 9 3/4	30#	500	1/500	128	16 x 8	7.1	10 x 10.25 x 5.25	0.31	43 x 41.5 x 46
18405	079594184052	5#	5 1/4 x 3 7/16 x 10 15/16	35#	500	1/500	96	12 x 8	9.8	11 x 11 x 5.5	0.39	46 x 34 x 47.5
18406	079594184069	6#	6 x 3 3/8 x 11 1/16	35#	500	1/500	84	12 x 7	10	11.5 x 11.5 x 6	0.46	47 x 35 x 48
18408	079594184083	8#	6 1/8 x 4 1/8 x 12 7/16	35#	500	1/500	84	12 x 7	12	13 x 10.5 x 6.25	0.49	44.5 x 40 x 48
18410	079594184106	10#	6 5/16 x 4 3/16 x 13 3/8	35#	500	1/500	72	12 x 6	12.7	13.5 x 11.5 x 6.75	0.61	44 x 41 x 44
18412	079594184120	12#	7 1/16 x 4 1/2 x 13 3/4	40#	500	1/500	60	10 x 6	17.3	14 x 14 x 7.25	0.82	43.5 x 40 x 47
18416	079594184168	16#	7 3/4 x 4 13/16 x 16	40#	500	1/500	45	9 x 5	21.6	16.25 x 13.25 x 8	1.00	44.5 x 42.5 x 44.5
18420	079594184205	20#	8 1/4 x 5 5/16 x 16 1/8	40#	500	1/500	45	9 x 5	25.3	16.5 x 13 x 8.5	1.06	50.5 x 40 x 46.5
18421	079594184212	20# SH	8 1/4 x 5 15/16 x 13 3/8	40#	500	1/500	45	9 x 5	24.2	14.5 x 13.75 x 8.5	0.98	43.5 x 44.5 x 46.5
18424	079594184243	25#	8 1/4 x 5 1/4 x 18	40#	500	1/500	40	8 x 5	25.7	18.5 x 11.5 x 8.5	1.05	47.5 x 37.5 x 46.5
18428	079594184281	25# SH	8 1/4 x 6 1/8 x 15 7/8	40#	500	1/500	45	9 x 5	24.7	15.5 x 12.5 x 8.5	0.95	47.5 x 40 x 46.5





# Dubl Life® SOS Husky Bags

## PERFORMANCE FEATURES

- Made from 100% Recycled Paper
- Bags are FSC® chain of custody certified
- Heavy duty self opening style (SOS) bags for the most demanding applications

Custom  
printing  
available



Item#	UPC	Bag Size	Dimensions	Basis Weight	Bale Pack	Pack Config.	Bales/Pallet	Ti/Hi	Bale Weight (lbs.)	Bale Dimensions L x W x H	Cubic	Load Dimensions
29802	079594298025	2#	4 5/16 x 2 7/16 x 7 7/8	50#	500	2/250	150	30 x 5	8	8 x 7 x 8	0.26	49.5 x 38 x 46.5
29803	079594298032	3#	4 3/4 x 2 15/16 x 8 3/16	50#	500	2/250	108	12 x 9	10	9 x 15.75 x 4.75	0.39	47 x 37 x 47
29804	079594298049	4#	5 x 3 1/8 x 9 3/4	50#	500	2/250	80	20 x 4	11.8	10 x 8 x 10	0.46	43 x 41 x 44
29805	079594298056	5#	5 1/4 x 3 7/16 x 10 15/16	50#	500	2/250	80	20 x 4	15.1	11 x 8.5 x 10.75	0.58	46.5 x 42 x 46.5
29806	079594298063	6#	6 x 3 5/8 x 11 1/16	50#	500	2/250	56	8 x 7	15.5	11.25 x 18.75 x 6.25	0.76	51 x 37 x 47.5
29808	079594298087	8#	6 1/8 x 4 1/8 x 12 7/16	50#	500	2/250	56	8 x 7	18.5	12.5 x 17 x 6.25	0.77	51 x 39 x 48
29810	079594298100	10#	6 5/16 x 4 3/16 x 13 3/8	50#	500	2/250	48	8 x 6	22.1	13.75 x 17.5 x 6.5	0.91	49.5 x 41.5 x 44
29812	079594298124	12#	7 1/16 x 4 1/2 x 13 3/4	50#	500	2/250	36	6 x 6	23.5	14 x 9 x 14.25	1.04	43 x 37 x 46.5
29816	079594298162	16#	7 3/4 x 4 13/16 x 16	50#	500	2/250	30	6 x 5	33.1	16.5 x 20.5 x 8	1.57	49.5 x 40.5 x 44
29820	079594298209	20#	8 1/4 x 5 5/16 x 16 1/8	50#	500	2/250	30	6 x 5	33.2	16.25 x 17 x 8.5	1.36	49.5 x 35 x 45.5
29821	079594298216	20# SH	8 1/4 x 5 5/16 x 13 3/8	50#	500	2/250	30	6 x 5	30.1	14 x 17.5 x 8.5	1.21	43 x 33 x 47
29823	079594298230	25#	8 1/4 x 5 1/4 x 18	50#	500	2/250	30	6 x 5	35.3	18.5 x 17.5 x 8.5	1.59	50 x 37 x 46
29824	079594292847	25# SH	8 1/4 x 6 1/8 x 15 7/8	50#	500	2/250	30	6 x 5	33.4	15.5 x 19.5 x 8.5	1.49	46.5 x 38 x 47



# Dubl Life<sup>®</sup> 1/6, 1/7 and 1/8 BBL Sacks

**NEW**



Available in stock or custom printing - see pages 14-15

## PERFORMANCE FEATURES

- Made from 100% Recycled Paper
- Bags are FSC<sup>®</sup> chain of custody certified
- Printing Capabilities: 1/6 BBL - Up to 4 colors on 4 sides; 1/8 BBL - Up to 3 colors on 4 sides; 1/7 BBL - Up to 3 colors on 2 sides

Item#	UPC	Bag Size	Dimensions	Basis Weight	Bale Pack	Pack Config.	Bales/Pallet	Ti/Hi	Bale Weight (lbs.)	Bale Dimensions L x W x H	Cubic	Load Dimensions
18061	179594180617	1/6 BBL	12 x 7 x 17	57#	500	1/500	20	6+8+6	55	18 x 18 x 12	59.38	54 x 40 x 47.5
18062	179594180624	1/6 BBL	12 x 7 x 17	60#	500	1/500	20	6+8+6	53.78	17.5 x 20 x 12	57.12	52.5 x 40 x 47
18063	179594180631	1/6 BBL	12 x 7 x 17	66#	500	1/500	20	6+8+6	62	18 x 21 x 12.5	63.66	54 x 42 x 48.5
13607	179594136072	1/6 BBL	12 x 7 x 17	70#	300	1/300	20	10x2	39.66	17.5 x 15.5 x 12	58.55	52 x 41 x 47
18065	179594180655	1/6 BBL	12 x 7 x 17	76#	400	1/400	20	6+8+6	58	17.5 x 19.5 x 12	57.12	52.5 x 40 x 47
18067	179594180679	1/7 BBL	12 x 7 x 14	57#	500	1/500	18	6x3	45.8	14.5 x 18 x 12	59.38	54 x 40 x 47.5
18068	179594180686	1/7 BBL	12 x 7 x 14	60#	500	1/500	18	6x3	45.8	14.5 x 18 x 12	59.38	54 x 40 x 47.5
18069	179594180693	1/7 BBL	12 x 7 x 14	66#	500	1/500	18	6x3	45.8	14.5 x 18 x 12	59.38	54 x 40 x 47.5
13606	179594136065	1/6 EZ-K UP	12 x 7 x 17	70#	300	1/300	18	9x2	47	19 x 19 x 12	51.36	48 x 43 x 43
18072	179594180723	1/7 EZ-K DN	12 x 7 x 14	70#	300	1/300	24	8x3	37	15 x 20 x 12	54.56	48.5 x 40.5 x 48
13608	179594136089	1/8 BBL	9 3/4 x 6 1/4 x 16 3/8	70#	400	1/400	20	10x2	42.1	20 x 16.5 x 9.8	59.29	51 x 41 x 49
13609	179594136096	1/8 BBL	10 1/8 x 6 3/4 x 14 3/8	70#	400	1/400	20	10x2	36.13	19 x 10.5 x 15	67.27	51 x 41 x 49
18073	179594180730	1/8 BBL	10 1/8 x 6 3/4 x 14 3/8	52#	500	1/500	30	10x3	41	16 x 18 x 11	67.27	52.5 x 41 x 54
18074	179594180747	1/8 BBL	9 3/4 x 6 1/4 x 16 3/8	52#	500	1/500	26	10+10+6	40	16.5 x 17.5 x 10.5	54.45	48.5 x 40 x 48.5
18075	179594180754	1/8 BBL	10 1/8 x 6 3/4 x 14 3/8	57#	500	1/500	30	10x3	45	16 x 17 x 11	66.01	52 x 41 x 53.5
18076	179594180761	1/8 BBL	9 3/4 x 6 1/4 x 16 3/8	57#	500	1/500	26	10+10+6	45	16.5 x 20 x 10.5	59.29	51 x 41 x 49



**NEW**



Custom printing available

# Dubl Life® Die Cut Handle, Liquor and Merchandise Bags

## PERFORMANCE FEATURES

- Made from 100% Recycled Paper
- Bags are FSC® chain of custody certified
- Pinch bottom Liquor Bags accommodate all of your libation needs in three convenient sizes
- Die Cut Handle Bag features large, wide, rectangular, flat bottom with reinforced handles and self opening system adds convenience to both you and your customer
- Versatile Merchandise Bag can be used for anything from greeting cards or socks to pastries

Item#	UPC	Bag Size / Description	Dimensions	Basis Weight	Bale Pack	Pack Config.	Bales/Pallet	Ti/Hi	Bale Weight (lbs.)	Bale Dimensions L x W x H	Cubic	Load Dimensions
18077	179594180778	Die Cut Handle*	11 x 6 x 11	40	500	1/500	36	9x4	27.83	16 x 13 x 11.5	1.38	48 x 41 x 45
19208	179594192085	Pint	3 ¾ x 2 ¼ x 11 ½	35#	500	1/500	150	15x10	6.9	13.5 x 8.5 x 4.25	0.28	42 x 42 x 45
19209	179594192092	Quart	4 ¼ x 2 ½ x 16	35#	500	1/500	80	10x8	9.9	17 x 8.5 x 4.5	0.38	42 x 35 x 40.5
13605	179594136058	Liter	5 x 3 x 16	50#	500	1/500	48	8x6	19.75	17.75 x 14 x 5.25	0.75	45 x 37 x 46.5
14059	179594140598	Merchandise	6 ¼ x 9 ¼	30#	1000	3000	24	12 X 2	29	12.5 x 11.5 x 21	1.67	45.5 x 40 x 47

\*plastic patch on die cut handle must be removed before recycling/composting



# Dubl Life® Carryout Shopping Bags

## PERFORMANCE FEATURES

- Made from 100% Recycled Paper
- Bags are FSC® chain of custody certified
- Assortment of bag footprints are perfect for a variety of foodservice containers and retail needs
- Features strong and comfortable paper twist handles ensuring safe transport

Custom printing available



Item #	UPC#	Description	Dimensions	Basis Weight	Pack Qty	Ship Wt.	Ti/Hi	Carton Cubic Ft.	Carton Dimensions (L X W X H)
87093	079594870931	Gem	5 ¼ x 3 ¼ x 8 ¾	60#	250	14.20	8 x 3	1.55	18 x 11 x 13 ½
75079	079594750790	Vino	5 ¼ x 3 ¼ x 13 ½	65#	250	17.21	8 x 3	1.55	18 x 11 x 13 ½
87097	079594870979	Tempo	8 x 4 ½ x 10 ¼	60#	250	21.75	6 x 4	2.61	17 x 18 ¾ x 14 ½
87124	079594871242	Missy	10 x 5 x 13	60#	250	26.00	6 x 4	3.14	21 ¾ x 18 ½ x 13 ½
87098	079594870986	Kary	9 x 5 ¾ x 13 ½	60#	250	27.00	4x4   4x3*	2.67	21 ¼ x 20 ¼ x 11
87490	079594874908	Bistro	10 x 6 ¾ x 12	60#	250	27.00	6 x 4	2.55	21 x 20 x 10 ½
87129	079594871297	Tote	16 x 6 x 12	65#	250	36.05	5 x 3	3.41	23 ¾ x 16 ¼ x 15 ¼
87523	079594875233	Jr. Mart	13 x 7 x 13	65#	250	33.00	6 x 3	2.94	20 ½ x 15 ½ x 16
87127	079594871273	Traveler	13 x 6 x 15 ¾	60#	250	35.00	6 x 3   6 x 2*	3.06	23 ½ x 14 ¾ x 15 ¼
87131	079594871310	Debonair	16 x 6 x 15 ¾	65#	200	41.00	6 x 3	2.83	20 x 16 ¾ x 16
87128	079594871280	Mart	13 x 7 x 17	65#	250	31.00	6 x 3	3.2	23 ½ x 15 x 16
87133	079594871334	Royal	14 x 8 x 14 ½	65#	200	35.00	6 x 3	2.98	21 ½ x 15 ½ x 15 ½
87415	079594874151	Regal	12 x 9 x 15 ¾	65#	200	33.00	7 x 3	2.49	20 ¾ x 13 x 16
87130	079594871303	Towner	16 x 6 x 19 ¼	65#	200	39.00	5 x 3	3.57	23 ¾ x 16 ¼ x 16
87145	079594871457	Super Royal	14 x 10 x 15 ¾	70#	200	41.53	6 x 3	3.2	23 ¾ x 16 ¼ x 16 ½
87148	079594871488	Cargo	18 x 7 x 18 ¾	70#	200	36.00	4 x 3	3.89	23 ½ x 18 ¾ x 15 ¼

\*Ti/Hi for Rio Bravo, MX

Ti/Hi may vary by manufacturing location. Please check with your Customer Service Representative for more details.



Available in stock or custom printing

# Dubl Life® Bread Bags

## PERFORMANCE FEATURES

- Made from 100% Recycled Paper
- Bags are FSC® chain of custody certified
- Perforated windows provide controlled crust formation
- Design drives upscale image for matched merchandising
- Recyclable and compostable when plastic component is removed



Item #	UPC #	Description	Dimensions	Case Pack	Case Weight	Case Cube	Cases/Pallet	Pallet TI HI
300738	10072181007380	Dubl Life® Bread Bag Artisan Wheat	3 ½ x 2 x 26	1M	24	1.86	28	4x7
300741	10072181007410	Dubl Life® Bread & Sub Bag Artisan Wheat	4 ½ x 2 ½ x 14 ½	1M	9	1.01	36	9x4
300739	10072181007397	Dubl Life® Bread Bag Artisan Wheat	4 ½ x 2 ½ x 24	1M	27	1.50	24	4x6
300740	10072181007403	Dubl Life® Bread Bag Artisan Wheat	5 ¼ x 3 ¼ x 20	1M	28	1.48	18	6x3
300730	10072181007304	Dubl Life® <b>Foil Garlic Bread Bag</b> Artisan Wheat	5 ¼ x 3 ¼ x 20	500	20	0.95	42	6x7
300733	10072181007335	Dubl Life® Window Bread Bag Artisan Wheat	3 ½ x 2 x 14	500	7	0.52	80	10x8
300735	10072181007359	Dubl Life® Window Bread Bag Artisan Wheat	3 ½ x 2 x 26	500	12	1.11	28	4x7
300736	10072181007366	Dubl Life® Window Bread Bag Artisan Wheat	4 ½ x 2 ½ x 24	500	14	1.08	36	6x6
300737	10072181007373	Dubl Life® Window Bread Bag Artisan Wheat	4 ½ x 2 ½ x 28	500	16	1.11	28	4x7
300732	10072181007328	Dubl Life® Window Bread Bag Artisan Wheat	6 x 3 ½ x 13	500	11	1.01	36	9x4
300734	10072181007342	Dubl Life® Window Bread Bag Artisan Wheat	6 ½ x 3 ½ x 22	500	18	1.08	36	6x6
300731	10072181007311	Dubl Life® Window Bread Bag Artisan Wheat	8 ½ x 3 x 14 ½	500	13	1.01	36	9x4



Item # 87415



Item # 45003

Item # 18828



Item # 31267

# Pre-Printed Dubl Life® Bags

## PERFORMANCE FEATURES

- Made from 100% Recycled Paper
- Bags are FSC® chain of custody certified
- Versatile stock prints for foodservice, grocery or retail needs
- Pre-printed bags stocked at various Novolex locations - contact your sales representative

Item #	UPC#	Description	Dimensions	Basis Weight	Pack Qty	Ship Wt.	Ti/Hi	Carton Cubic Ft.	Carton Dimensions (L X W X H)
29732	79594297325	Dubl Life® ToGo! Carryout Shopping Bag - Bistro	10 x 6 ¾ x 12	60#	250	30	6 x 4	2.27	21.25 x 16.5 x 11.125
87415	79594297332	Dubl Life® ToGo! Carryout Shopping Bag - Regal	12 x 9 x 15 ¾	65#	200	33	7 x 3	2.21	20.125 x 12.375 x 15.3
45003	179594450034	Dubl Life® 1/6 EZ-K UP Sustainable Future Bag	12 x 7 x 17	70#	300	47	9x2	2.51	19 x 19 x 12
18828	179594188289	Dubl Life® 1/7 EZ-K DN Sustainable Future Bag	12 x 7 x 14	70#	300	37	8x3	2.08	15 x 20 x 12
31250	179594136072	Dubl Life® 1/6 BBL - Thank You! Bag	12 x 7 x 17	70#	300	39.66	10x2	1.88	17.5 x 15.5 x 12
31267	179594180693	Dubl Life® 1/7 BBL - Thank You! Bag	12 x 7 x 14	66#	500	45.8	6x3	1.81	14.5 x 18 x 12
31249	179594136065	Dubl Life® 1/6 EZ-K UP - Thank You! Bag	12 x 7 x 17	70#	300	47	9 x 2	2.51	19 x 19 x 12

# Printing Capabilities: Custom Solutions



**Dubl Life® Logo**  
co-branding to enhance  
your sustainability mission



## CUSTOM BRANDING OPPORTUNITIES

- Promote your brand and enhance your sustainability image by choosing products manufactured with post-consumer recycled content and branded with the **Dubl Life® Logo**.
- Custom printing is available on all of our stock bags - contact your Novolex sales representative.



Contact your local Novolex™ Sales Representative to request samples of our stock bags or learn more about our custom print capabilities and minimums.

[novolex.com/contact](http://novolex.com/contact)



# Locations and Brands



## Sustainability: A continuous journey of improvement

**Novolex is a leader in sustainable paper and plastic flexible packaging with a broad portfolio of solutions focused on source reduction, energy and water conservation, and end of life product planning and management.**

Some of the Novolex™ sustainability solutions we bring to our customers include: recycled content plastic and paper products, compostable plastic and paper products, renewable substrates, Novolex's Bag-2-Bag® plastic bag and film recycling program, lower impact substrates such as our EcoCraft® and Dubl Life® lines of paper products, and other industry leading innovations that minimize raw materials while maximizing performance.



©April 2017 Novolex™.  
Learn more about the Novolex™ family of brands at [novolex.com](http://novolex.com).



[www.novolex.com](http://www.novolex.com) | 101 E Carolina Avenue | Hartsville, SC 29550 | 800-845-6051

N\_PG\_0102\_0417